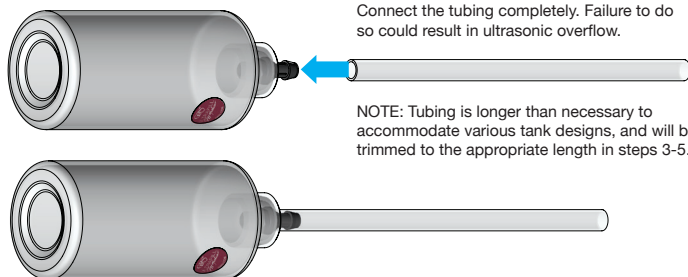


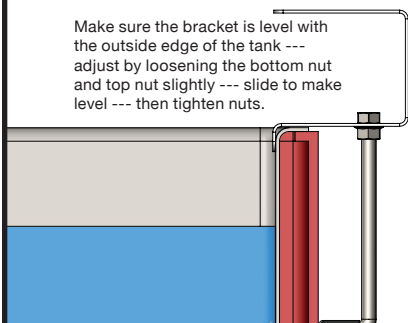
SETUP

1 ATTACH TUBING



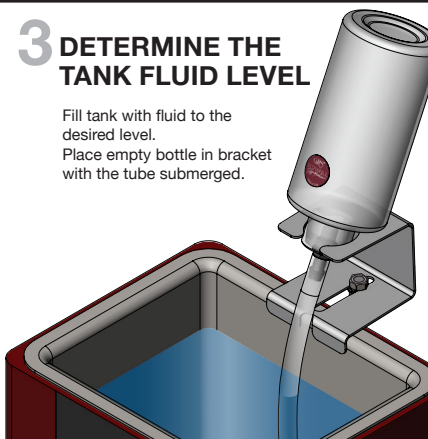
2 ATTACH BRACKET TO ULTRASONIC TANK TO HOLD BOTTLE

Make sure the bracket is level with the outside edge of the tank --- adjust by loosening the bottom nut and top nut slightly --- slide to make level --- then tighten nuts.

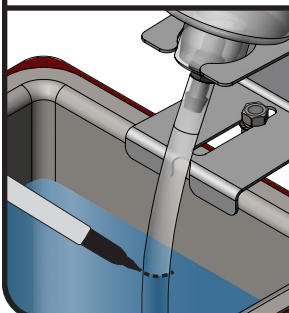


3 DETERMINE THE TANK FLUID LEVEL

Fill tank with fluid to the desired level.
Place empty bottle in bracket with the tube submerged.

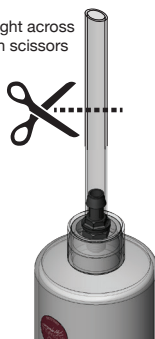


4 MARK TUBE AT TANK FLUID LEVEL

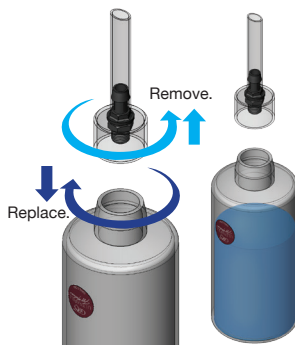


5 CUT TUBE AT MARK

Cut straight across tube with scissors or knife



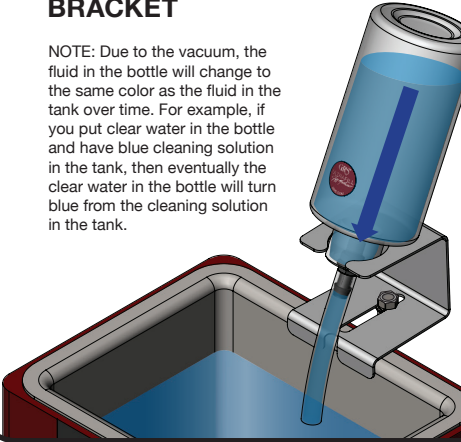
6 FILL BOTTLE WITH WATER



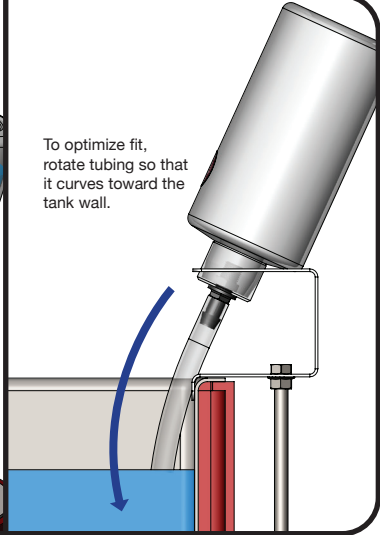
SETUP (CONTINUED)

7 INSERT FILLED BOTTLE UPSIDE-DOWN INTO BRACKET

NOTE: Due to the vacuum, the fluid in the bottle will change to the same color as the fluid in the tank over time. For example, if you put clear water in the bottle and have blue cleaning solution in the tank, then eventually the clear water in the bottle will turn blue from the cleaning solution in the tank.



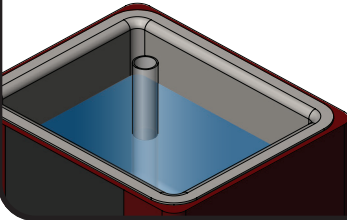
To optimize fit, rotate tubing so that it curves toward the tank wall.



ACCESSORIES

1 GLASS VIALS

Use the glass vial and a flashlight (not included) to inspect the bottom of the tank for dropped stones.



Sprue wax can be placed on the bottom/side of the vials to pick up stones from the bottom of the tank. Leave open area on the vial so the bottom of the tank will still be visible. Work quickly because the sprue wax will melt in the tank.

2 STEAM TWEEZERS AND MAGNET

Magnet can be used to attach steam tweezers to the tank or other ferrous metal surface.

NOTE: Magnet has adhesive back and can be positioned on many surfaces.



900 Overlander Road • P.O. Box 1153
Emporia, KS 66801 USA
800-835-3519 • 620-343-1084 • Fax: 620-343-9640
hello@grs.com • grs.com

LIT-591

Last Update: 2025-09-12