

ORIGINAL INSTRUCTIONS

GRS[®]

GRAVERHONE[®]

ONE

OPERATION AND MAINTENANCE MANUAL

#006-200



**READ THIS MANUAL ENTIRELY
BEFORE CONNECTING TO POWER.**

Damage not covered by the warranty may result from not following the instructions and maintenance in this manual.

Important notes are **highlighted in yellow** or **marked in red**.

CONTENTS

IMPORTANT NOTICE FOR OPERATORS	2
INTRODUCTION	3
REQUIRED EQUIPMENT & IMPORTANT NOTES....	3
OVERVIEW	4
SETUP	6
OPERATION	7
MAINTENANCE	8
SERVICE & REPAIR.....	8
SPECIFICATIONS	8
WARRANTY	8

IMPORTANT NOTICE FOR OPERATORS

Read this manual thoroughly before operation. Training is not required but is recommended before use of this product. The manufacturer is not responsible for injury resulting from improper operation or when used by untrained operators.



Do not modify this equipment or remove warning labels. Modifications can increase risks to the operator. Do not use this equipment if it is damaged. This equipment allows the use of small sharp cutting tools that can break suddenly. Always wear eye protection appropriate for each application, and protect hands from sharp edges. No user serviceable parts inside. Do not remove any outer surfaces.

Always wear sufficient eye protection. Take steps to avoid dust inhalation by wearing appropriate respiratory protection.

Do not lift or transport by grasping the drive plate or spindle. Allow the drive plate and sharpening wheel to come to a complete stop before:

- grasping the drive plate and / or wheel
- changing the wheel
- grasping or attempting to remove the wheel lock

Plug into grounded outlets only. **Do not use adapters that bypass the ground plug. Visually inspect power cord for damage before connecting to AC power.**

When using this equipment, do not wear loose clothing or large rings. Long hair should be tied back.

Do not apply excessive or forceful pressure to a tool while using this unit. This action may result in damage to the tool, the unit and its components, and / or the operator.

Tools may become hot while operating this unit as intended. Protect skin and surfaces from burns or damage.

Tools can be extremely sharp after this unit is used as intended. Protect skin and surfaces from punctures, cuts, or damage.

Do not attempt to operate this unit in any position other than upright as shown with the Front View on page 4.

The proper use of this equipment does not generate noise above 70dB(A).

Speed Range is 400-1400 RPM. It is not advised to run abrasive wheels above 900 RPM due to accelerated wear, heat buildup, and rapid material removal from the graver being sharpened.

INTRODUCTION

The GraverHone® One is designed to be used for the purpose of sharpening and polishing tools.

REQUIRED EQUIPMENT & IMPORTANT NOTES

- **Included 24-volt power converter connected to a properly grounded electrical power outlet**



USE ONLY THE SUPPLIED 24-VOLT POWER CONVERTER. VISUALLY INSPECT POWER CORD FOR DAMAGE BEFORE CONNECTING TO AC POWER. The included power converter may be connected to any properly grounded single-phase source of AC power within a voltage range of 100 to 240 V, 50 or 60 Hz. The power converter must be used with a suitable grounded electrical system. Using it with an ungrounded system could expose the equipment to electrical damage. Do not use older generation power converters. If a replacement is needed, contact GRS or an authorized GRS dealer.

-
- **A sturdy surface with adequate lighting**

Make use of a heavy workbench or suitable solid furniture to support this equipment, workpiece, and any additional equipment and supplies. Adequate lighting allows clear sight, and may help prevent accidents and reduce fatigue.

-
- **Respiratory protection appropriate for the material being ground**



The dust created while sharpening some tool materials may present a health risk.

-
- **Eye protection**

FOR URGENT SITUATIONS, STOP THE UNIT IMMEDIATELY BY:

- Pressing the RUN/STOP button or RPM Dial | Setting rocker switch to the center “off” position
 - Disconnect the 24-volt power converter from the back of the unit
 - Disconnect the 24-volt power converter from the electrical power source
-

GRAVERHONE® ONE OVERVIEW



FRONT VIEW

A DIGITAL DISPLAY

B ROTATIONS PER MINUTE (RPM) DIAL Speed is controlled by rotating the dial. The speed control starts and stops the motor when the rocker switch is in one of the two running directions by pressing the knob.

C ROCKER SWITCH

Forward rotation switch position	=	
Stop		
Reverse rotation switch position	—	

D MENU Enter the programming menu. **IT IS NOT ADVISED TO MODIFY THE CONTROLLER PROGRAMMING, AS THERE IS NO PERFORMANCE ADVANTAGE TO BE GAINED.** For informational purposes only, see the programming operation on page 5.

E Increase speed.

F Decrease speed.

G Starts and stops the GraverHone® One.

BACK VIEW & TOP VIEW



(H) WHEEL LOCK (#111-521)

(K) POWER RECEPTACLE

(I) BOLT (#111-515)

(L) METAL WASHER (#024-417)

(J) SPINDLE

(M) DRIVE PLATE (#111-522)

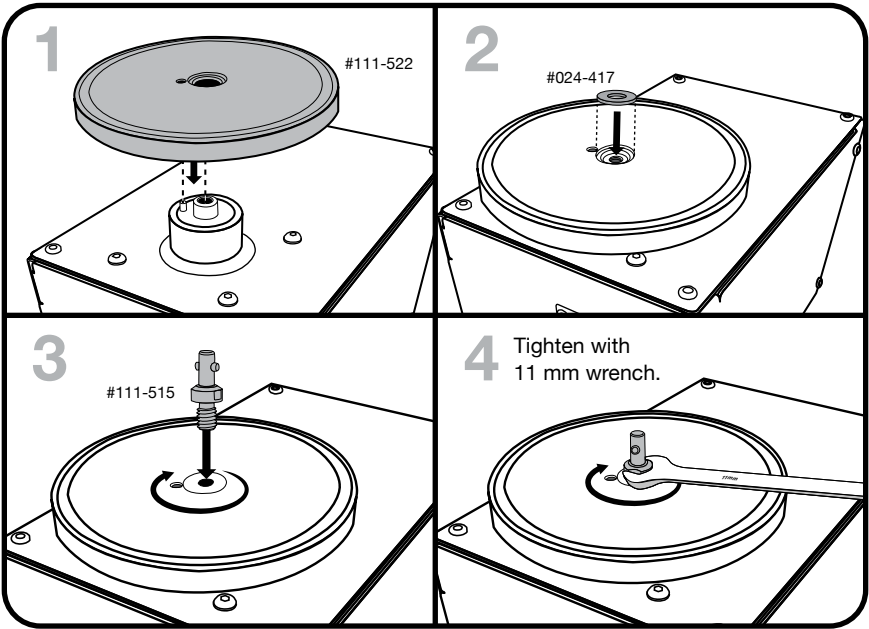
(D) MENU The menu button enters the programming menu. **IT IS NOT ADVISED TO MODIFY THE CONTROLLER PROGRAMMING, AS THERE IS NO PERFORMANCE ADVANTAGE TO BE GAINED.** For informational purposes only, the programming operation is included here.

Press the MENU button to cycle through functions 1-8. Rotating the RPM Dial (B) changes settings on each function. Press MENU again to confirm and exit. In menu mode, the first (leftmost) digit will represent the function step. The three digits to the right of that will represent the value for that function. Values exceeding 999 drop the last digit and are represented with a flashing first digit. For example, if Function 4 is set to 1400, which is represented by 4.140 with the 1 flashing.

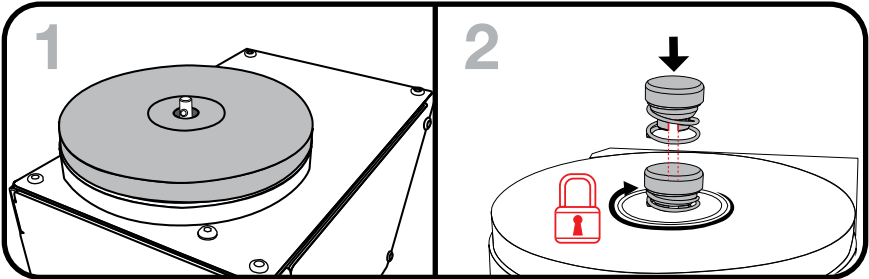
- **1: Soft Start Time Setting** This number, set from 0-100 (equivalent to 0-10 seconds). Default setting: 1 second.
- **2: Soft Stop Time Setting** Same as function 1, but to stop rather than start. Default setting: 1 second.
- **3: Speed Lower Limit** Default setting: 400 RPM.
- **4: Digital Scaling** This is used to map motor RPM to PWM duty cycle (the length of the pulses used to set motor speed). Default setting: 1400.
- **5: Speed Adjustment Increment** This setting controls how much the motor speed will change for each click of the control knob. Default setting: 10.
- **6 and 7: Control Mode** These are used to auto-start or jog-run the motor.
- **8: Full Reset** Holding the MENU button for 8 seconds factory resets the controller.

SETUP

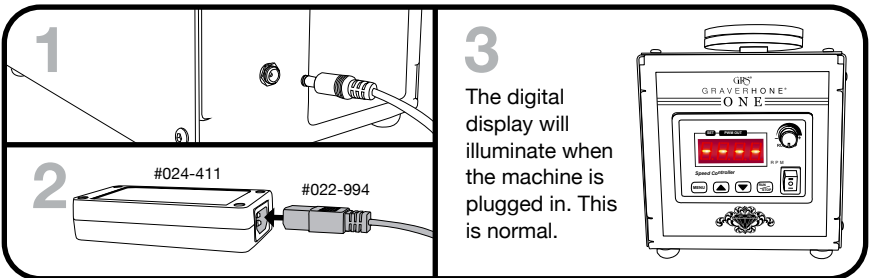
ATTACH DRIVE PLATE



ATTACH SHARPENING WHEEL



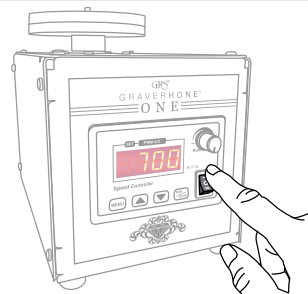
CONNECT ELECTRICAL POWER




OPERATION

RUN/STOP SHARPENING SYSTEM


1




Set rocker switch to

== Forward rotation 

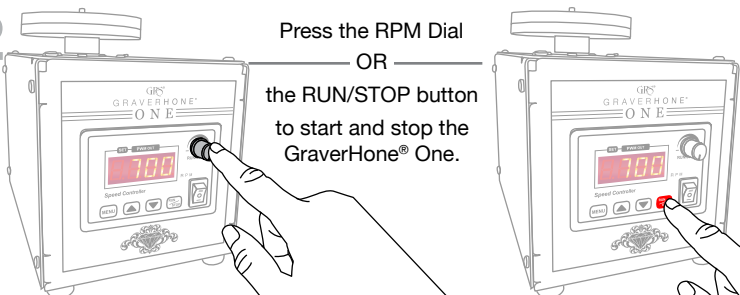
— OR —

== Reverse rotation 

 Once started, the motor can be stopped with the rocker switch by placing it in the middle position. If the motor is stopped with the rocker switch, it will restart with the rocker switch.

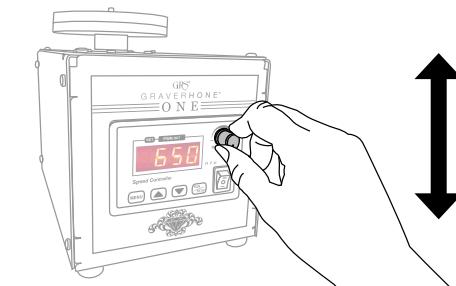
2

Press the RPM Dial — OR — the RUN/STOP button to start and stop the GraverHone® One.



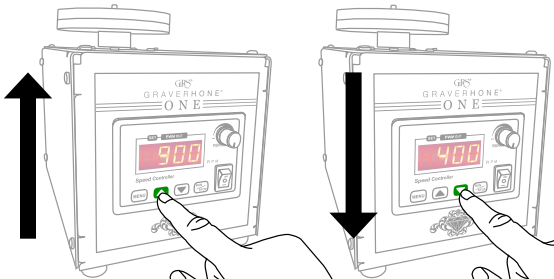
SET SPEED (ROTATIONS PER MINUTE)

1



Turn the RPM dial

OR



press the green up and down arrow buttons to increase and decrease speed.

It is not advised to run abrasive wheels above 900 RPM due to accelerated wear, heat buildup, and rapid material removal from the graver being sharpened.

MAINTENANCE

Disconnect the power supply from the unit prior to performing any maintenance or repair. To maintain this unit, keep all surfaces free of dust and debris with regular cleaning using a damp cloth. Take appropriate measures to avoid inhaling dust while cleaning.

SERVICE & REPAIR

Please call GRS or an authorized GRS dealer for service and repair. Unauthorized servicing will void the 2-year warranty. **This unit is not serviceable by the operator and must be sent in to GRS or an authorized GRS dealer for repair.**

WARRANTY

Each GraverHone® One carries a full 2-year warranty covering parts and labor. Contact GRS or an authorized GRS dealer before returning any equipment.

For guidance with operation or maintenance, please contact GRS or an authorized GRS dealer. To send a request for assistance via electronic formats, e-mail support@glendo.com or visit: <https://www.grs.com/customer-service/>

GRAVERHONE® ONE SPECIFICATIONS

DIMENSIONS

SIZE: 6.1" x 10.7" x 8.5" [155 mm x 272 mm x 216 mm]
WEIGHT: 11.3 lb [5.1 kg]

ELECTRICAL SUPPLY REQUIREMENTS

Voltage: 100/240 VAC
Frequency: 50/60 Hz
Phases: 1
Current: 1.2 A

ENVIRONMENTAL OPERATING CONDITIONS

Temperature range: 40°F [4°C] to 100°F [38°C]
Relative humidity: Up to 85% at a maximum temperature of 100°F [38°C]
Altitude: Up to 10,000 ft [3048 m] above mean sea level
Transportation and storage temperature range: 0°F [-18°C] to 120°F [49°C]

SOUND EMISSIONS

Max Sound Level: 44.2 dBA / 61.9 dBC*

**Measured at 39.4" (1 meter) from the equipment*



Glendo LLC
900 Overlander Road • Emporia, KS 66801 USA
Phone: +1-620-343-1084 • Fax: +1-620-343-9640
E-mail: hello@grs.com • grs.com
Products made in USA. © 2025 Glendo LLC. All rights reserved.

LIT-587

Last Updated: 06/10/2025