



LEICA MICROSCOPE STAND

502-032 • INSTRUCTIONS

Option 1: Installation of the Arm Post

on the Jura Bench

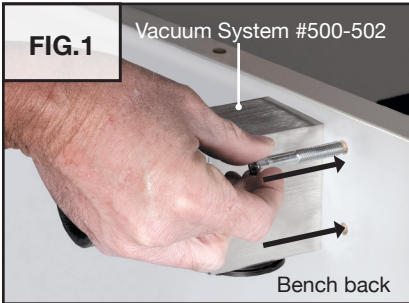


FIG.1

Vacuum System #500-502

Bench back

Bench shown with top panels removed for these instructions. It is not necessary to remove top to install the microscope stand.

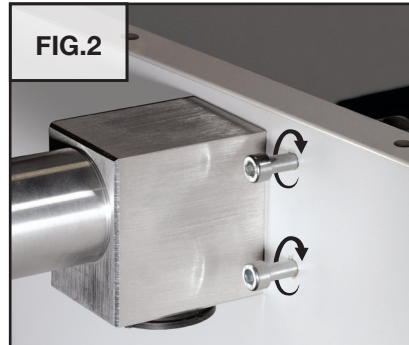


FIG.2

Tighten bolts enough to fit plastic spacers on front side of bench (FIG. 9).

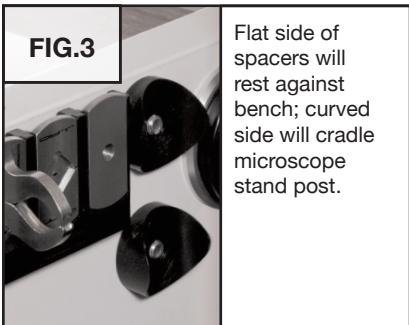


FIG.3

Flat side of spacers will rest against bench; curved side will cradle microscope stand post.

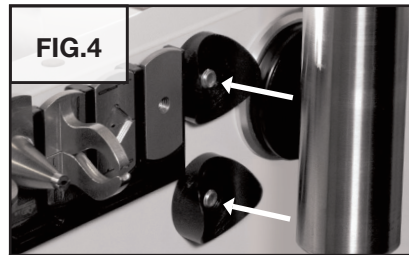


FIG.4

Line the holes on the post up with the bolts.



FIG.5

Hold the post in place and tighten bolts on the back of the bench.

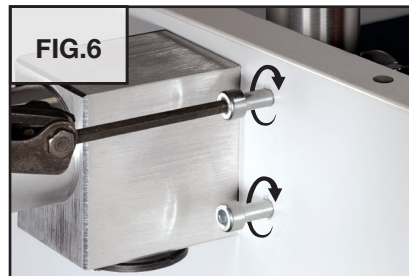


FIG.6

Tighten with a hex wrench as needed.

Option 2: Installation of the Arm Post

on any bench surface



FIG.7

Use a 8.8 mm (or 11/32") size bit to drill a hole in the surface you want to mount the stand to.

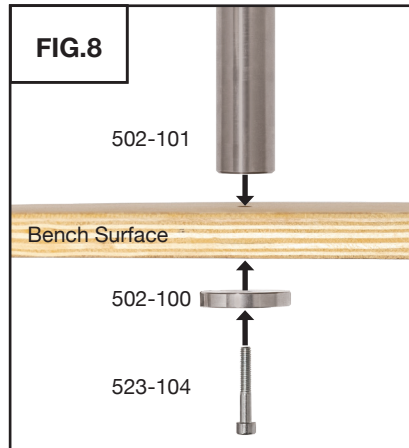


FIG.8

502-101

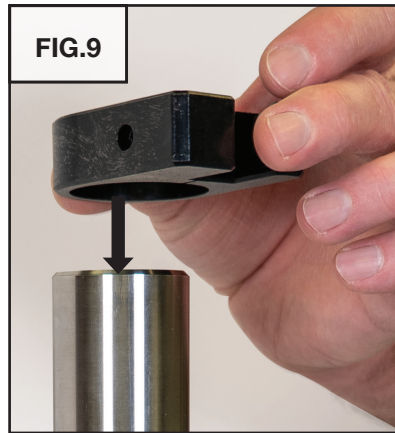
Bench Surface

502-100

523-104

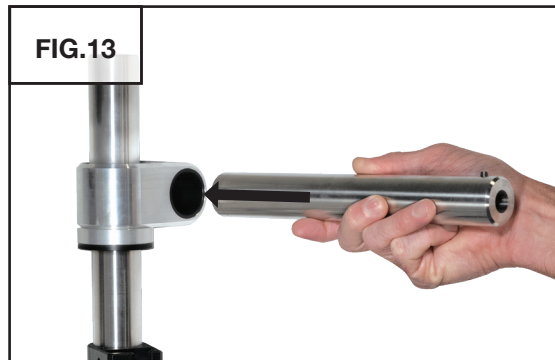
Minimum Bench Thickness: 19 mm
Maximum Bench Thickness: 30 mm

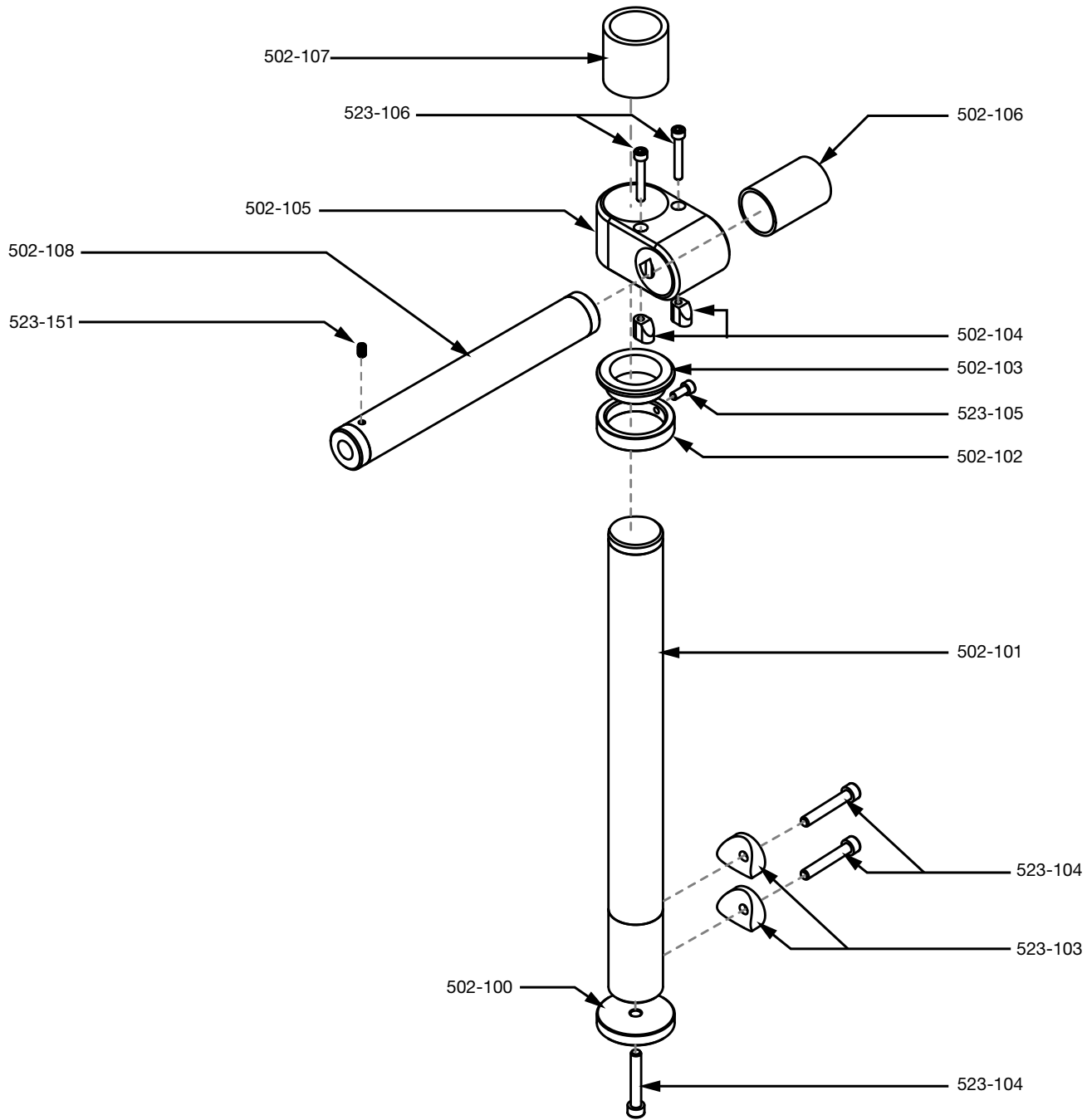
(OPTIONAL) Installation of Holder for Caliper



If you are going to install the holder for caliper (523-015), do so before the next step. See LIT-516.

Arm and Microscope Head Installation





PART #	DESCRIPTION	QTY
502-100	BASE THICK WASHER (MOUNTING)	1
502-101	VERTICAL SUPPORT TUBE ASSEMBLY JURA STAND	1
502-102	SUPPORT RING (CLAMPING)	1
502-103	SUPPORT RING BUSHING	1
502-104	ECCENTRIC CLAMP ELEMENT	2
502-105	ALUMINUM UNION BLOCK	1
502-106	PLASTIC BUSHING INSERT (SMALL)	1
502-107	PLASTIC BUSHING INSERT (LARGE)	1
502-108	JURA MICROSCOPE STAND HORIZ ARM ASSEMBLY	1
523-103	CURVED SPACER TO MOUNT VERTICAL MICROSCOPE STAND TUBE TO BENCH WALL	2
523-104	M8 SHCS X 1.25 50MM LONG BRIGHT ZINC	3
523-105	M6 SHCS X 1.0 14MM LONG STAINLESS STEEL	1
523-106	M6 SHCS X 1.0 40MM LONG STAINLESS STEEL	2
523-151	M6 X 1 10MM LONG SS SHSS	1