



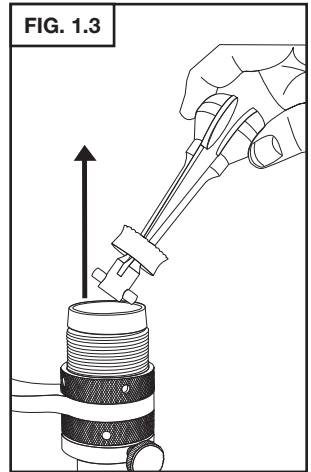
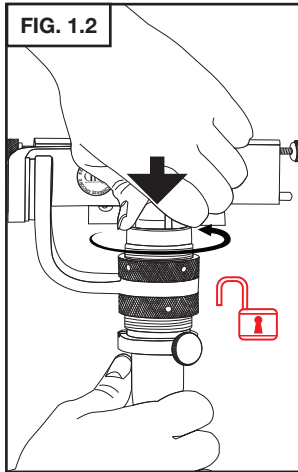
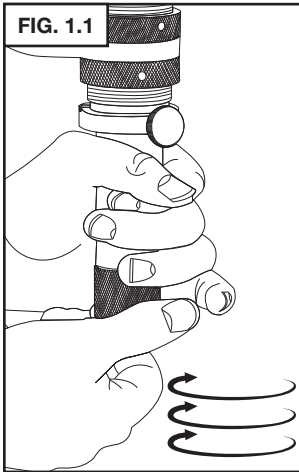
# BenchMate<sup>®</sup>

## VERTICAL I.D. RING HOLDER

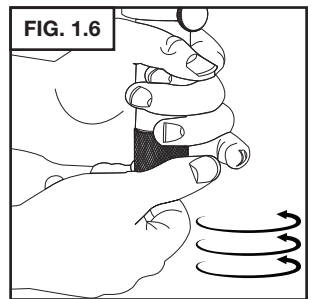
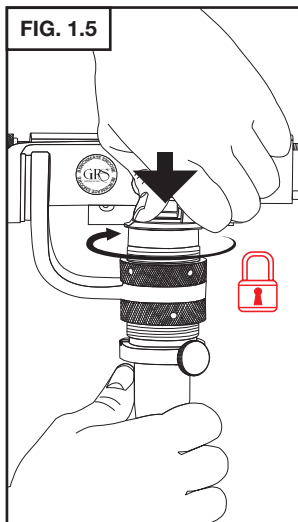
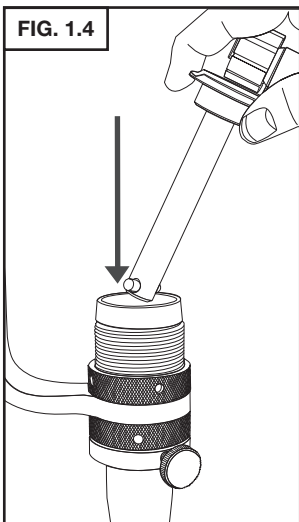
INSTRUCTIONS • #004-878

### 1. CHANGING BENCHMATE ENCORE<sup>®</sup> QC FIXTURES

#### FIXTURE REMOVAL

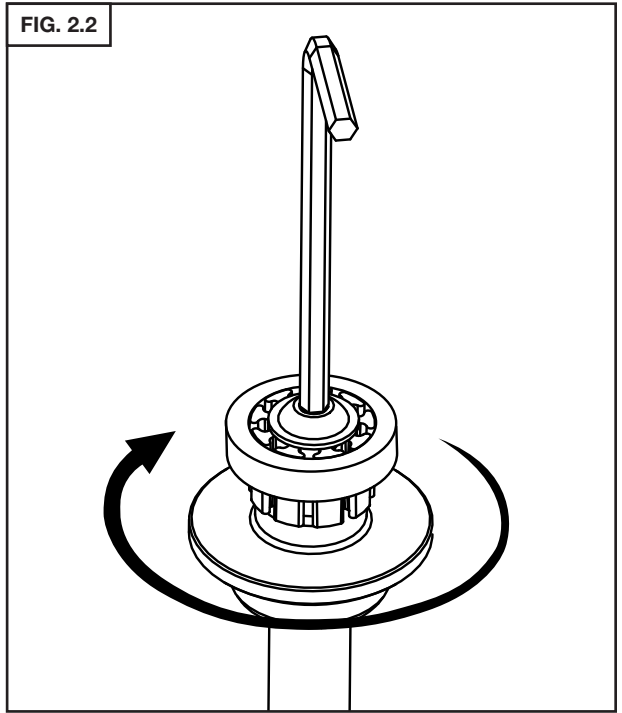
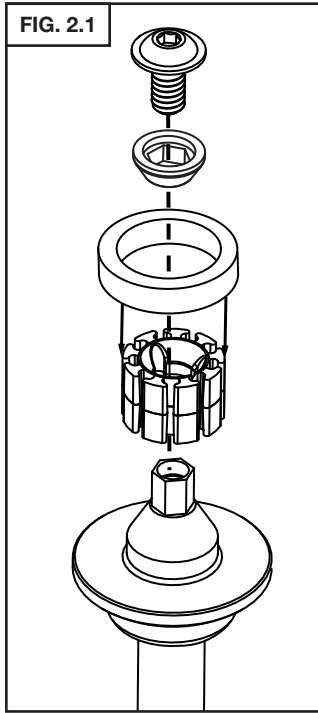


#### FIXTURE INSTALLATION

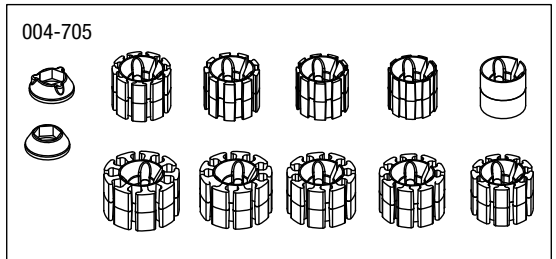
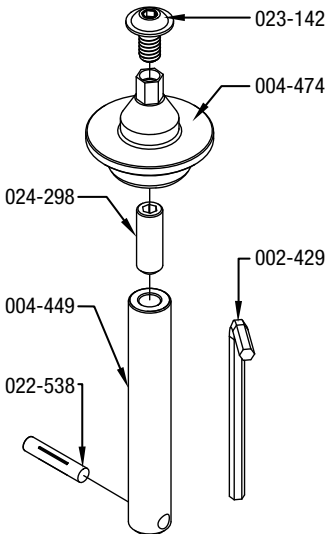


**⚠ WARNING**  
Make sure QuickChange fixture is seated fully before tightening with mandrel knob. A fixture can be ejected with force if not properly seated when tightening.

## 2. WORKHOLDING



## PARTS LIST



PART NO.	DESCRIPTION	QTY
002-429	WRENCH, 5/32" ALLEN	1
004-449	ACCESSORY MOUNT	1
004-474	INSIDE RING HOLDER VERT STD HEIGHT	1
004-705	SET OF 10 MOLDED ID MANDRELS WITH 2 EXPANSION CONES BAGGED	1
022-538	DRIVE LOC PIN	1
023-142	FLANGED BUTTON HEAD CAP SCREW	1
024-298	5/16-18 SOCKET HEAD SET SCREW X 7/8	1

# GLENDO LLC

900 Overlander Road • Emporia, KS 66801 USA  
 800-835-3519 • 620-343-1084 • Fax: 620-343-9640  
 grs@grstools.com • www.grstools.com  
 Last Update: 2021-11-02