

MEIJI MICROSCOPE STAND

INSTRUCTIONS

Instructions apply to the following product(s):



502-023

Arm Assembly

FIG.1



FIG.2



FIG.3

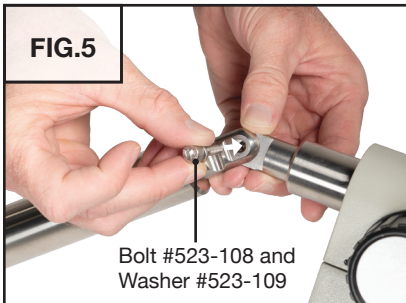


Bolt #523-108 and washer #523-109 may be attached to arm. Remove if installed.

FIG.4



FIG.5



Bolt #523-108 and Washer #523-109



Be sure to insert bolt on flat side of arm.

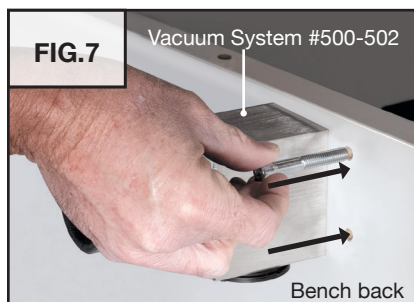


FIG.6

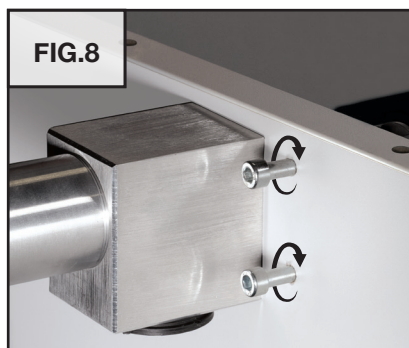


Option 1: Installation of the Arm Post

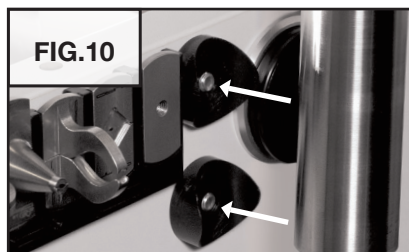
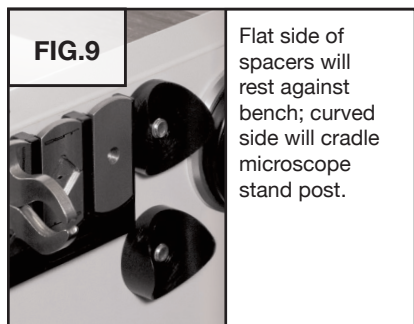
on the Jura Bench



Bench shown with top panels removed for these instructions. It is not necessary to remove top to install the microscope stand.



Tighten bolts enough to fit plastic spacers on front side of bench (FIG. 9).



Line the holes on the post up with the bolts.



Hold the post in place and tighten bolts on the back of the bench.



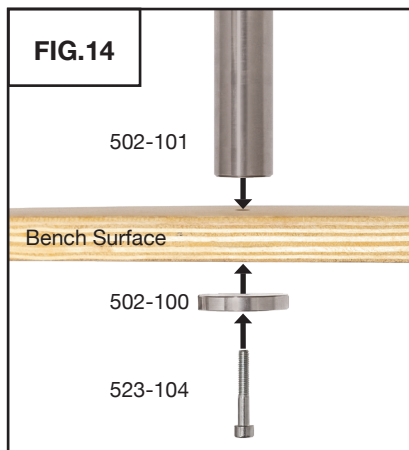
Tighten with a hex wrench as needed.

Option 2: Installation of the Arm Post

on any bench surface



Use a 8.8 mm (or 11/32") size bit to drill a hole in the surface you want to mount the stand to.



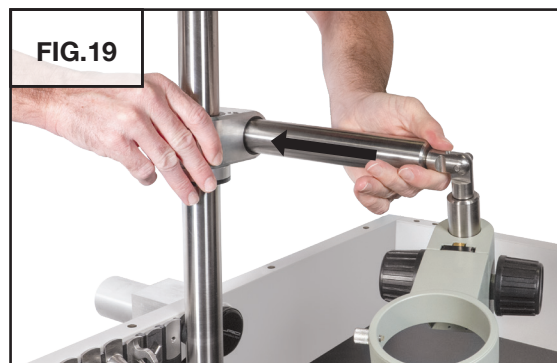
Minimum Bench Thickness: 19 mm
Maximum Bench Thickness: 30 mm

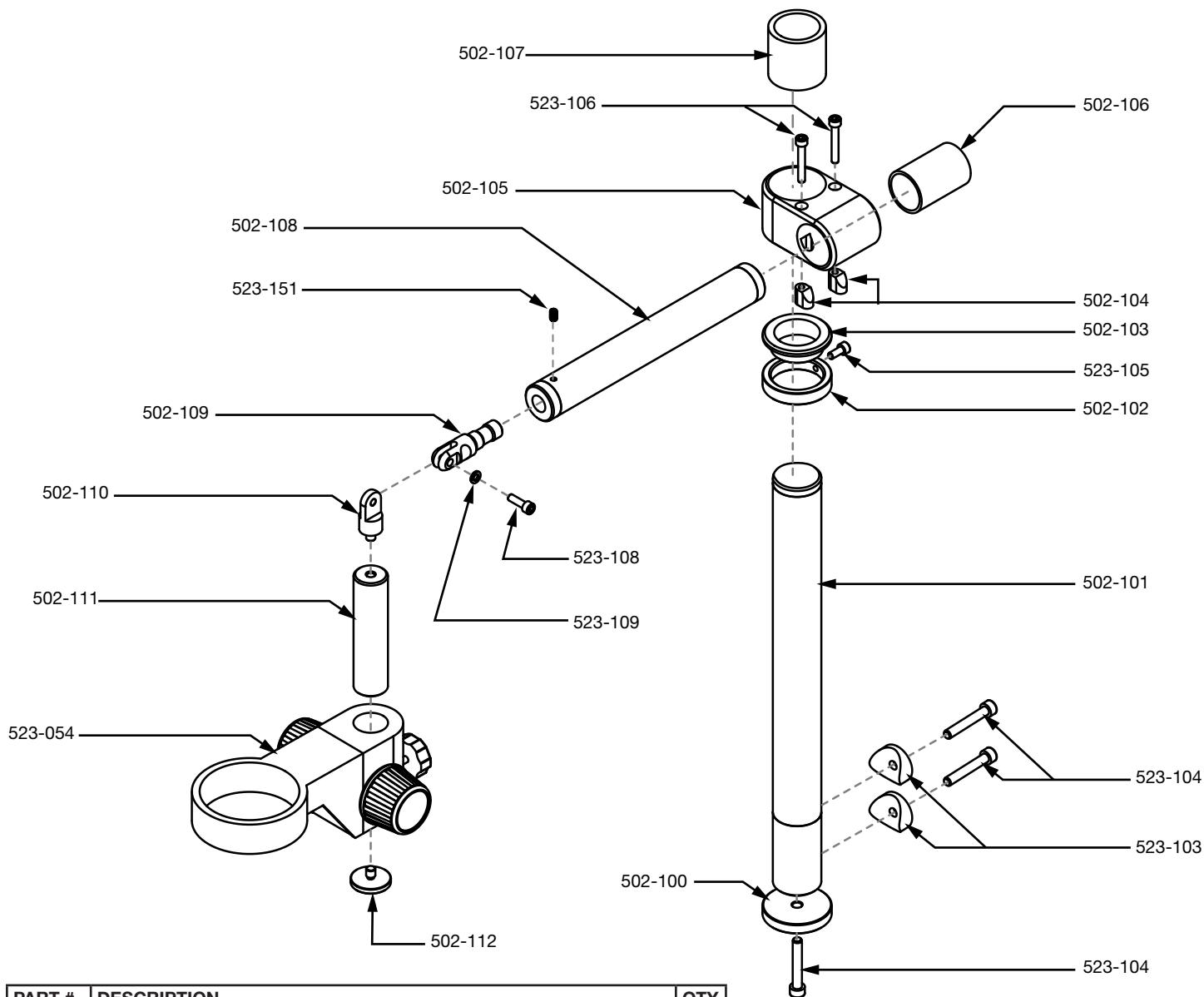
(OPTIONAL) Installation of Holder for Caliper



If you are going to install the holder for caliper (523-015), do so before the next step. See LIT-516.

Arm and Microscope Head Installation





| PART # | DESCRIPTION | QTY |
|---------|---|-----|
| 502-100 | BASE THICK WASHER (MOUNTING) | 1 |
| 502-101 | VERTICAL SUPPORT TUBE ASSEMBLY JURA STAND | 1 |
| 502-102 | SUPPORT RING (CLAMPING) | 1 |
| 502-103 | SUPPORT RING BUSHING | 1 |
| 502-104 | ECCENTRIC CLAMP ELEMENT | 2 |
| 502-105 | ALUMINUM UNION BLOCK | 1 |
| 502-106 | PLASTIC BUSHING INSERT (SMALL) | 1 |
| 502-107 | PLASTIC BUSHING INSERT (LARGE) | 1 |
| 502-108 | JURA MICROSCOPE STAND HORIZ ARM ASSEMBLY | 1 |
| 502-109 | FOCUS BLOCK PIVOT FREE | 1 |
| 502-110 | FOCUS BLOCK PIVOT FIXED | 1 |
| 502-111 | VERTICAL TUBE FOCUS BLOCK MOUNT | 1 |
| 502-112 | DROP ARM FOCUS BLOCK STOP | 1 |
| 523-054 | FOCUS BLOCK AND HEAD HOLDER FOR JURA MICROSCOPE STAND | 1 |
| 523-103 | CURVED SPACER TO MOUNT VERTICAL MICROSCOPE STAND TUBE TO BENCH WALL | 2 |
| 523-104 | M8 SHCS X 1.25 50MM LONG BRIGHT ZINC | 3 |
| 523-105 | M6 SHCS X 1.0 14MM LONG STAINLESS STEEL | 1 |
| 523-106 | M6 SHCS X 1.0 40MM LONG STAINLESS STEEL | 2 |
| 523-108 | M6 SHCS X 1.0 20MM LONG STAINLESS STEEL | 1 |
| 523-109 | M6 STAINLESS STEEL FLAT WASHER | 1 |
| 523-151 | M6 X 1 10MM LONG SS SHSS | 1 |