

MEIJI MICROSCOPE STAND

INSTRUCTIONS

Instructions apply to the following product(s):

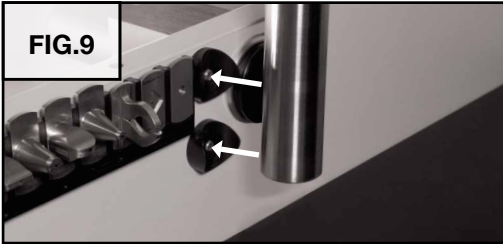


502-023

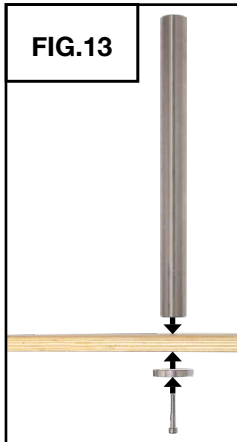
Arm Assembly



Option 1: Installation of the Arm Post on the Jura Bench



Option 2: Installation of the Arm Post on any bench surface



Use a 8.8 mm (or 11/32") size bit to drill a hole in the surface you want to mount the stand to.

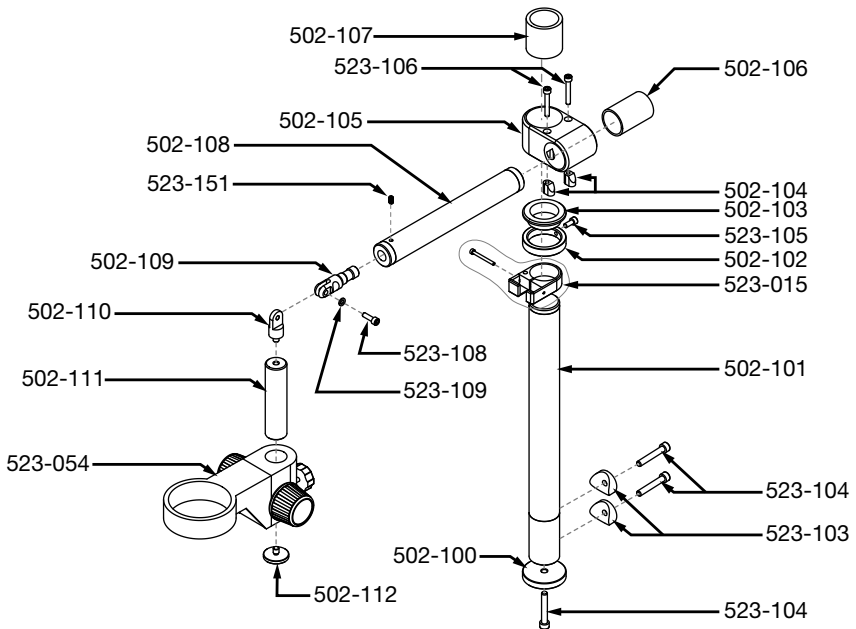
(OPTIONAL) Installation of Holder for Caliper



If you are going to install the holder for caliper (523-015), do so before the next step. See LIT-516.

Arm and Microscope Head Installation





PART #	DESCRIPTION	QTY
502-100	BASE THICK WASHER (MOUNTING)	1
502-101	VERTICAL SUPPORT TUBE ASSEMBLY JURA STAND	1
502-102	SUPPORT RING (CLAMPING)	1
502-103	SUPPORT RING BUSHING	1
502-104	ECCENTRIC CLAMP ELEMENT	2
502-105	ALUMINUM UNION BLOCK	1
502-106	PLASTIC BUSHING INSERT (SMALL)	1
502-107	PLASTIC BUSHING INSERT (LARGE)	1
502-108	JURA MICROSCOPE STAND HORIZ ARM ASSEMBLY	1
502-109	FOCUS BLOCK PIVOT FREE	1
502-110	FOCUS BLOCK PIVOT FIXED	1
502-111	VERTICAL TUBE FOCUS BLOCK MOUNT	1
502-112	DROP ARM FOCUS BLOCK STOP	1
523-015	INJECTION MOLDED HOLDER FOR DIGITAL CALLIPER	1
523-054	FOCUS BLOCK AND HEAD HOLDER FOR JURA MICROSCOPE STAND	1
523-103	CURVED SPACER TO MOUNT VERTICAL MICROSCOPE STAND TUBE TO BENCH WALL	2
523-104	M8 SHCS X 1.25 50MM LONG BRIGHT ZINC	3
523-105	M6 SHCS X 1.0 14MM LONG STAINLESS STEEL	1
523-106	M6 SHCS X 1.0 40MM LONG BLACK OXIDE	2
523-108	M6 SHCS X 1.0 20MM LONG STAINLESS STEEL	1
523-109	M6 STAINLESS STEEL FLAT WASHER	1
523-151	M6 X 1 10MM LONG SS SHSS	1