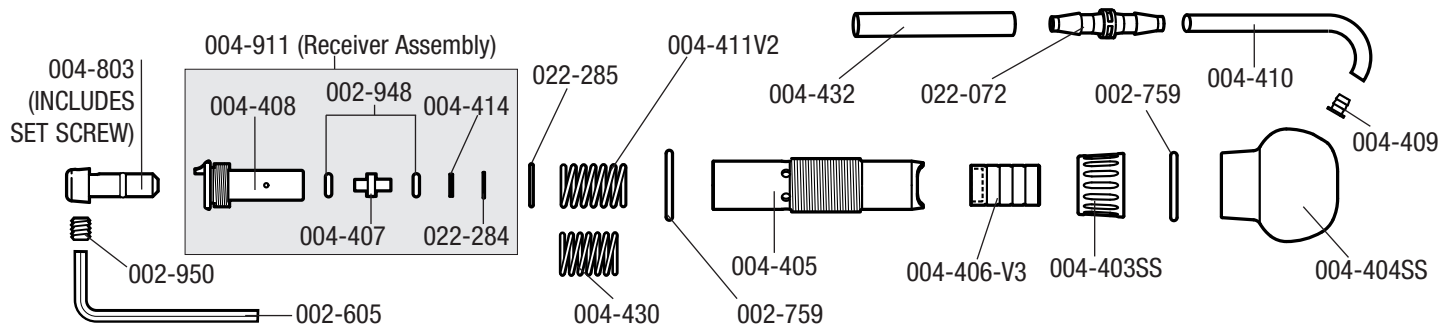


# GRS® 901™ QC Handpiece

PARTS LIST • #004-901



Part #	Description	Part #	Description	Part #	Description
002-950	8-32 X .13	004-406-V3	Piston / Hammer	004-432	Air Hose - 1/4" OD X.16 ID X 4"
002-605	Allen Wrench	004-407	Anvil	004-803	Quick Change Chuck (complete with set screw)
002-759	O-Ring 1/2" ID X 1/16" Wide	004-408	Chuck Receiver	022-072	Tube Coupling
002-948	O-Ring 1/8" ID X 1/16" Wide	004-409	Air Hose Retainer	004-414	Washer
004-403SS	Locking Nut	004-410	Air Hose - 1/8" ID X 40"	022-284	Internal Retaining Ring
004-404SS	Handle Knob	004-411-V2	Spring	022-285	O-Ring 10 mm ID X 1 mm Wide
004-405	Handpiece Body	004-430	Fine Work Spring		

**GLENDO LLC**

900 Overlander Road • Emporia, KS 66801 USA  
 800-835-3519 • 620-343-1084 • Fax: 620-343-9640  
 grs@grstools.com • grs.com  
 Last Updated: 2021/03/02