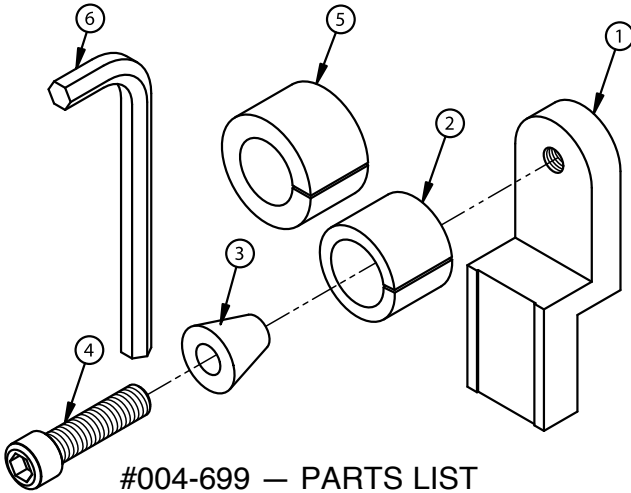
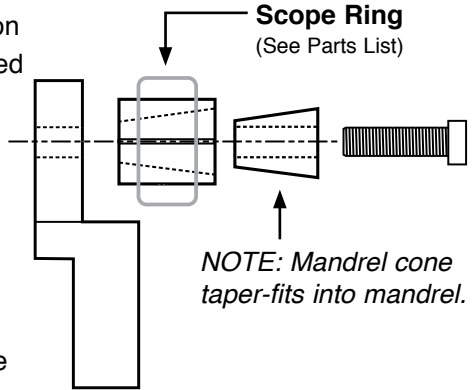


GRS[®] Scope Ring Fixture INSTRUCTIONS

For any GRS Block and most vises • PART #004-699

- Insert bolt through the expansion cone and place inside the selected mandrel.
- Position scope ring on the selected mandrel.
- Attach bolt to ring holder frame with the supplied wrench until scope ring is snug.
- Secure scope ring holder fixture in a ball vise.



Part No.	Description
1	004-467 Inside Scope Ring Holder Base
2	004-466 Mandrel - 1.0" Scope Ring
3	004-464 Expansion Cone for Ring Mandrel
4	002-400 5/16"-18 x 1.25" SHCS
5	004-465 Mandrel - 30 mm Scope Ring
6	002-751 1/4" short arm hex wrench