



# Quick Wheel Change Adapter

INSTRUCTIONS • #001-838

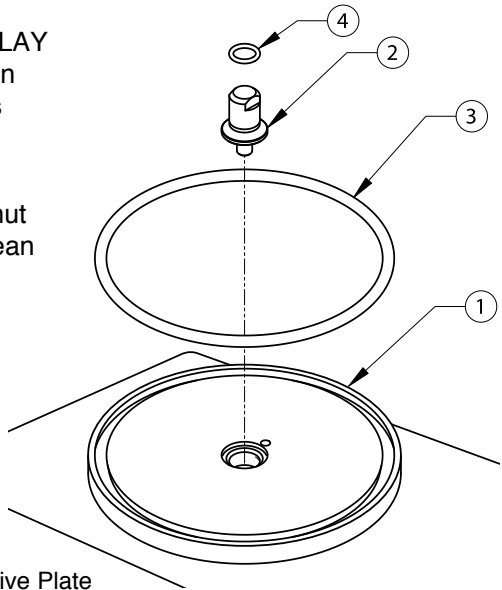
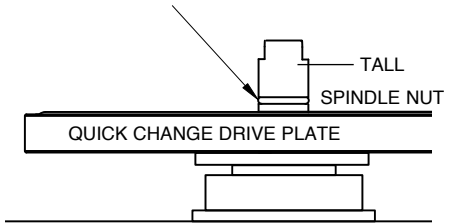
This drive plate assembly replaces the standard wheel knob on the original Power Hone so you can change wheels simply.

Remove existing thumb screw and wheel from Power Hone. Position the Quick Wheel Change Drive Plate where the wheel was. Secure adapter in position with the Tall Spindle Nut (Do not overtighten). The adapter allows you to simply slide wheels ON and OFF of the Power Hone.

NOTE: The O-Ring on the Tall Spindle Nut makes for a NO PLAY fit. If you desire, the O-Ring can be removed for a true, but less snug fit.

If you notice any slippage of a wheel, make sure tall spindle nut is tight and/or the O-Ring is clean and free of dirt and grease.

Lubricate O-Ring lightly with SUPER LUBE GREASE. Do NOT use oil. Oil will swell O-Ring and keep wheel from seating properly.



## PARTS LIST FOR 001-838

- |   |         |                                  |
|---|---------|----------------------------------|
| 1 | 011-397 | Quick Change Drive Plate         |
| 2 | 011-415 | Tall Spindle Nut                 |
| 3 | 002-780 | O-Ring - 4 1/2" x 4 7/8" x 3/16" |
| 4 | 002-084 | O-Ring - 3/8" x 1/2" x 1/16"     |

# GLENDO LLC

900 Overlander Road • Emporia, KS 66801 USA  
800-835-3519 • 620-343-1084 • Fax 620-343-9640  
glendo@glendo.com • www.grstools.com  
Last Updated: December 16, 2014

LIT-011-133