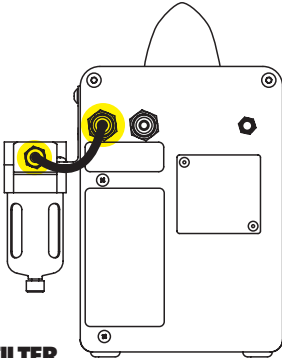


QUICK SET UP INSTRUCTIONS

GraverSmith®

1



GRS® AIR FILTER

Connect the air filter to the GraverSmith® by loosening the side cover screw and sliding the bracket onto the screw. Re-tighten screw.

Find the black hose 139mm (5 1/2"). Connect one end to the **air input quick connect fitting** on the back of the machine and the other end to the straight **quick connect fitting**.

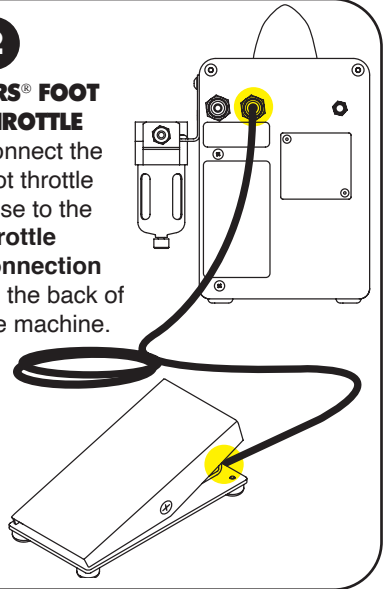
Connect the air compressor hose to the 90° **quick connect fitting** or the barbed fitting supplied.

NOTICE: This machine requires clean, dry, oil-free air. We suggest using an oil-free compressor. If your compressor is an oil type, you MUST have an oil removal filter, coalescing type (#004-579 or equivalent), in the air supply line to this machine. If you are unsure of this requirement, please call 800-835-3519 and ask for Technical Services. OIL CONTAMINATION IS NOT COVERED BY WARRANTY.

2

GRS® FOOT THROTTLE

Connect the foot throttle hose to the **throttle connection** on the back of the machine.

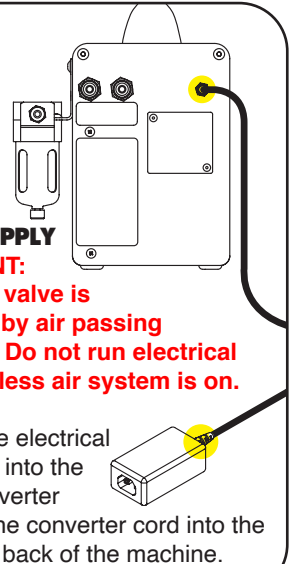


3

POWER SUPPLY

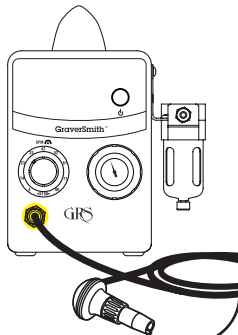
IMPORTANT: The rotary valve is lubricated by air passing through it. Do not run electrical system unless air system is on.

Connect the electrical power cord into the 24 Volt converter box. Plug the converter cord into the jack on the back of the machine.

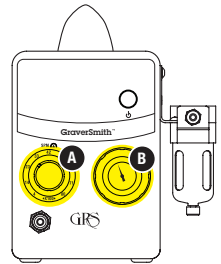


4**GRS® IMPACT HANDPIECE**

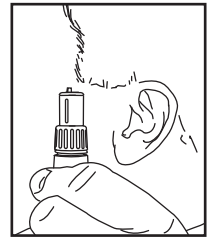
Connect the handpiece hose to the handpiece quick connect fitting.

**5****HANDPIECE TUNING**

Set the **stroke per minute (A)** to 2300. Set the **main air regulator knob (B)** to 0.1 ~ 0.4 BAR (2~5 PSI).



Hold the handpiece you have selected to use vertically, tool holder end up, next to your ear. Without depressing the foot throttle or palm control, **SLOWLY** increase the air pressure until the handpiece begins to buzz. Continue to increase the air pressure until the handpiece vibrates and knocks. Slowly add air pressure until the knocking stops and add 2 psi (.13 bar). This is the perfect air pressure for each handpiece. Now you are free to move the SPM (strokes per minute) dial to whatever setting desired.

**GLENDO LLC**

900 Overlander Road • P.O. Box 1153
 Emporia, KS 66801 USA
 800-835-3519 • 620-343-1084 • Fax: 620-343-9640
 glendo@glendo.com • www.grstools.com
 Last Updated: 2016-03-22

LIT-328