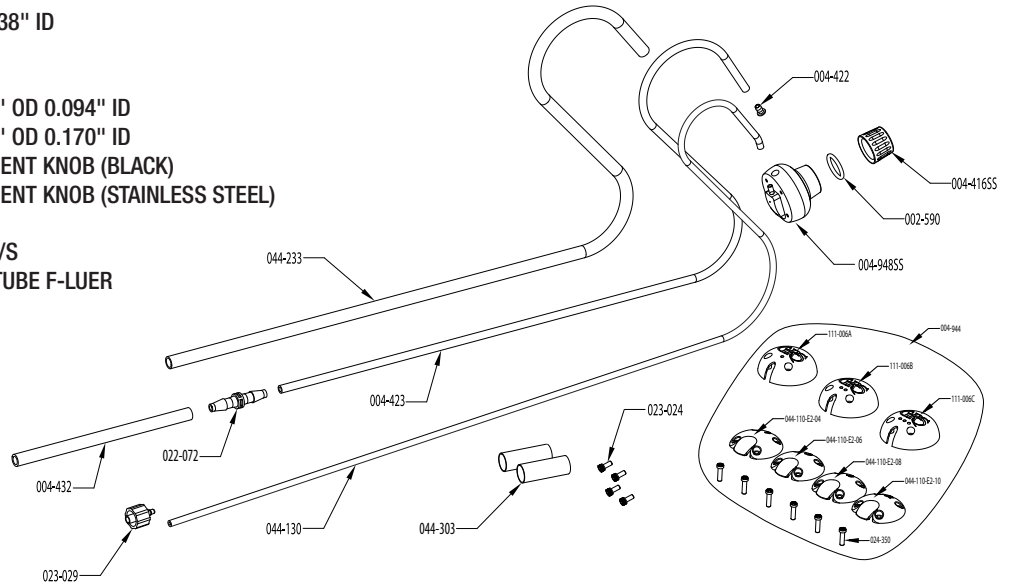


**#004-952 MONARCH PALM KNOB KIT (BLACK) or
#004-952SS MONARCH PALM KNOB KIT (STAINLESS) STEEL**

PART NO.	QTY.	DESCRIPTION
002-590	1	O-RING, 0.563" OD 0.438" ID
004-416SS	1	LOCKING NUT
004-422	1	HOSE/BARB RETAINER
004-423	1	TUBING, PU CLR 0.156" OD 0.094" ID
004-432	1	TUBING, PU CLR 0.250" OD 0.170" ID
004-948	1	MONARCH PALM ELEMENT KNOB (BLACK)
004-948SS	1	MONARCH PALM ELEMENT KNOB (STAINLESS STEEL)
022-072	1	TUBE COUPLING, 5/32
023-024	8	SHCS, #2-56 x 0.19" S/S
023-029	1	FITTING, M-0.063" ID TUBE F-LUER
044-110-D1	3	PALM PAD, E2, #04
044-110-E2-06	3	PALM PAD, E2 #06
044-110-E2-08	3	PALM PAD, E2 #08
044-110-E2-10	3	PALM PAD, E2 #10

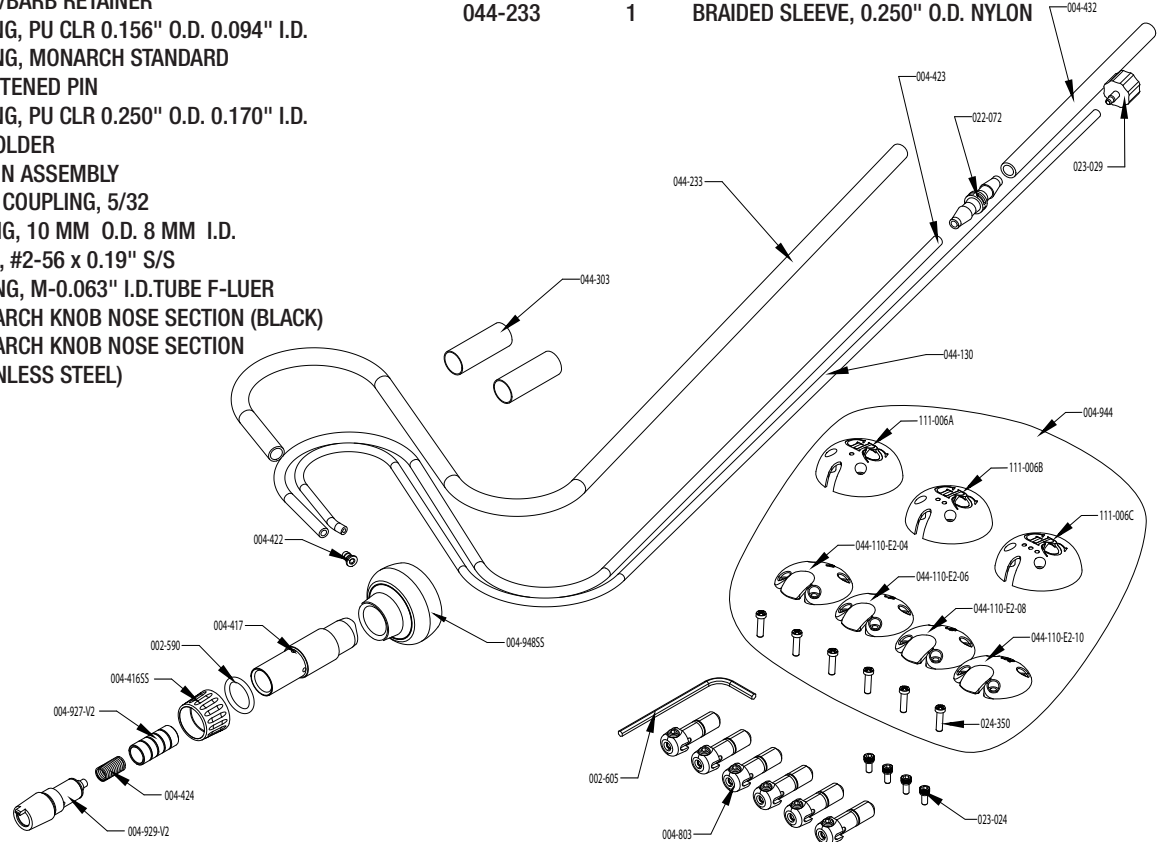
044-130	1	TUBING, PU CLR 0.125" OD 0.063" ID
044-131	2	SHRINK WRAP, BLK 0.375" ID
044-233	1	BRAIDED SLEEVE, 0.250" OD NYLON



**#004-921-AT MONARCH AIRTACT HANDPIECE (BLACK) or
#004-921-ATSS MONARCH AIRTACT HANDPIECE
(STAINLESS STEEL)**

PART NO.	QTY.	DESCRIPTION
002-590	2	O-RING, 0.563" O.D. 0.438" I.D.
002-605	1	WRENCH, 5/64 ALLEN
004-416SS	1	LOCKING NUT
004-417	1	HANDPIECE BARREL
004-422	1	HOSE/BARB RETAINER
004-423	1	TUBING, PU CLR 0.156" O.D. 0.094" I.D.
004-424	1	SPRING, MONARCH STANDARD
004-425	1	SHORTENED PIN
004-432	1	TUBING, PU CLR 0.250" O.D. 0.170" I.D.
004-803	6	QC HOLDER
004-927	1	PISTON ASSEMBLY
022-072	1	TUBE COUPLING, 5/32
022-308	1	O-RING, 10 MM O.D. 8 MM I.D.
023-024	8	SHCS, #2-56 x 0.19" S/S
023-029	1	FITTING, M-0.063" I.D. TUBE F-LUER
044-108	1	MONARCH KNOB NOSE SECTION (BLACK)
044-108SS	1	MONARCH KNOB NOSE SECTION (STAINLESS STEEL)

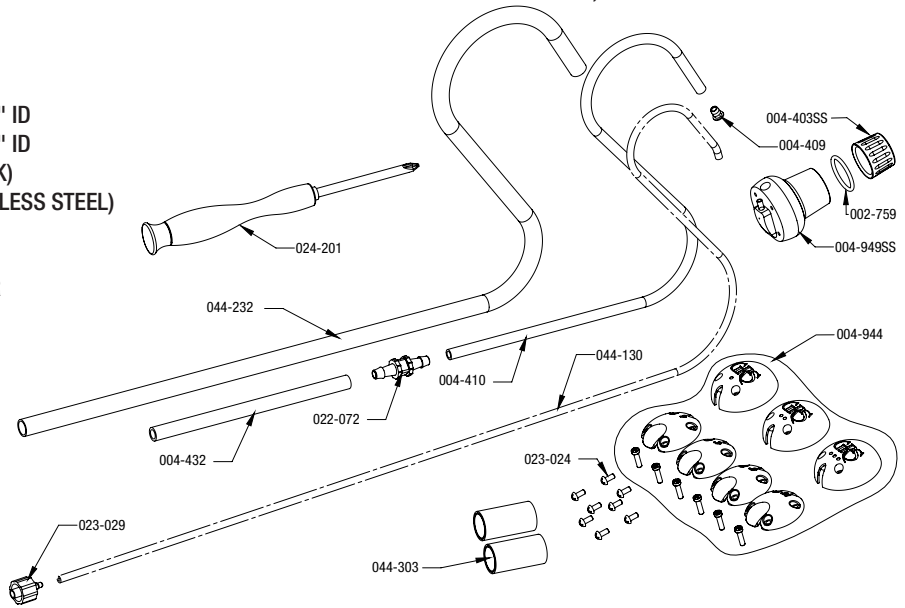
044-110-E2-04	3	PALM PAD, E2 #04
044-110-E2-06	3	PALM PAD, E2 #06
044-110-E2-08	3	PALM PAD, E2 #08
044-110-E2-10	3	PALM PAD, E2 #10
044-126	1	FITTING, 0.094" O.D. 0.063" I.D. x 0.35"
044-128	1	A/T PALM KNOB MONARCH (BLACK)
044-128SS	1	A/T PALM KNOB MONARCH (STAINLESS STEEL)
044-130	1	TUBING, PU CLR 0.125" O.D. 0.063" I.D.
044-131	2	SHRINK WRAP, BLK 0.375" I.D.
044-233	1	BRAIDED SLEEVE, 0.250" O.D. NYLON



#004-953 901 PALM KNOB KIT (BLACK) or #004-953SS 901 PALM KNOB KIT (STAINLESS STEEL)

PART NO.	QTY.	DESCRIPTION
002-759	1	O-RING, 0.625" OD 0.500" ID
004-403SS	1	LOCKING NUT
004-409	1	HOSE/BARB RETAINER
004-410	1	TUBING, PU CLR 0.188" OD 0.125" ID
004-432	1	TUBING, PU CLR 0.250" OD 0.170" ID
004-949	1	901 PALM ELEMENT KNOB (BLACK)
004-949SS	1	901 PALM ELEMENT KNOB (STAINLESS STEEL)
022-072	1	TUBE COUPLING, 5/32
023-024	8	SHCS, #2-56 x 0.19" S/S
023-029	1	FITTING, M-.063" ID TUBE F-LUER
044-110-D1	3	PALM PAD, E2 #04
044-110-E2-06	3	PALM PAD, E2 #06
044-110-E2-08	3	PALM PAD, E2 #08
044-110-E2-10	3	PALM PAD, E2 #10

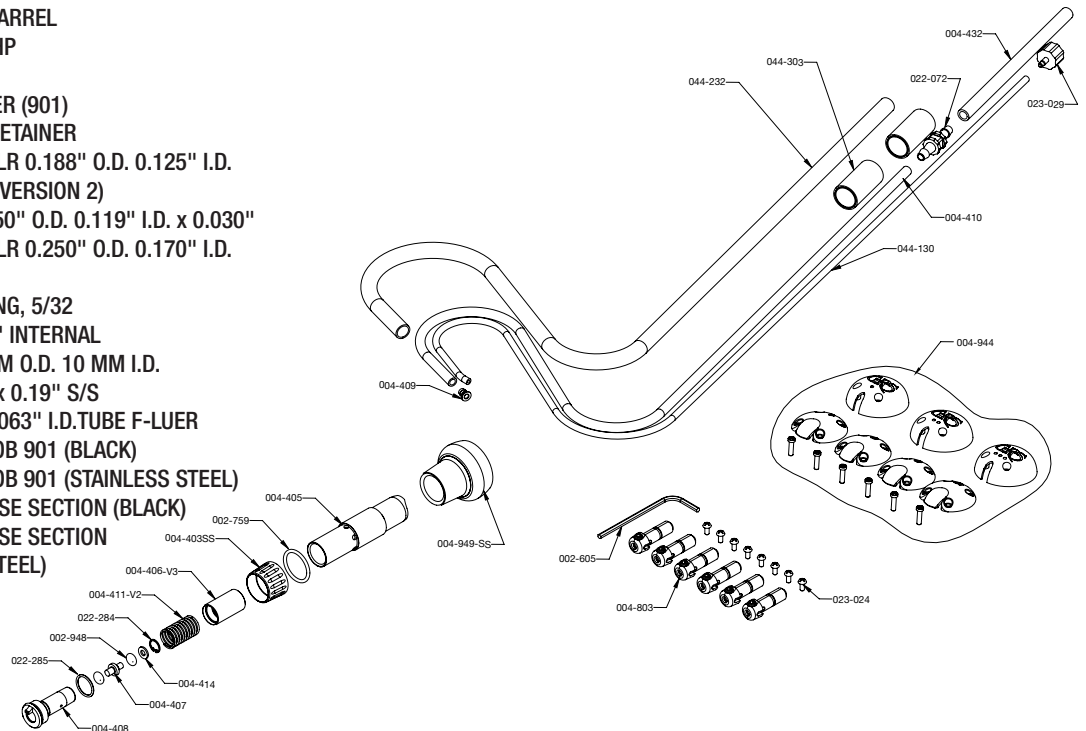
044-130	1	TUBING, PU CLR 0.125" OD 0.063" ID
044-131	2	SHRINK WRAP, BLK 0.375" ID
044-232	1	BRAIDED SLEEVE, 0.313" OD NYLON



#004-901-AT 901 AIRTACT HANDPIECE (BLACK) or #004-901-ATSS 901 AIRTACT HANDPIECE (STAINLESS STEEL)

PART NO.	QTY.	DESCRIPTION
002-605	1	WRENCH, 5/64 ALLEN
002-759	2	O-RING, 0.625" O.D. 0.500" I.D.
002-948	2	O-RING, 0.250" O.D. 0.125" I.D.
004-403SS	1	LOCKING NUT
004-405	1	HANDPIECE BARREL
004-406-V3	1	PISTON, 901 HP
004-407	1	ANVIL
004-408	1	TOOL RECEIVER (901)
004-409	1	HOSE/BARB RETAINER
004-410	1	TUBING, PU CLR 0.188" O.D. 0.125" I.D.
004-411-V2	1	SPRING 901 (VERSION 2)
004-414	1	WASHER, 0.250" O.D. 0.119" I.D. x 0.030"
004-432	1	TUBING, PU CLR 0.250" O.D. 0.170" I.D.
004-803	6	QC HOLDER
022-072	1	TUBE COUPLING, 5/32
022-284	1	C-CLIP, 0.250" INTERNAL
022-285	1	O-RING, 12 MM O.D. 10 MM I.D.
023-024	8	SHCS, #2-56 x 0.19" S/S
023-029	1	FITTING, M-0.063" I.D. TUBE F-LUER
044-107	1	A/T PALM KNOB 901 (BLACK)
044-107SS	1	A/T PALM KNOB 901 (STAINLESS STEEL)
044-109	1	901 KNOB NOSE SECTION (BLACK)
044-109SS	1	901 KNOB NOSE SECTION (STAINLESS STEEL)

044-110-E2-04	3	PALM PAD, E2, #04
044-110-E2-06	3	PALM PAD, E2 #06
044-110-E2-08	3	PALM PAD, E2 #08
044-110-E2-10	3	PALM PAD, E2 #10
044-126	1	FITTING, 0.094" O.D. 0.063" I.D. x 0.35"
044-130	1	TUBING, PU CLR .125" O.D. 0.063" I.D.
044-131	2	SHRINK WRAP, BLK 0.375" I.D.
044-232	1	BRAIDED SLEEVE, 0.313" O.D. NYLON



GLENDO LLC

900 Overlander Road • Emporia, KS 66801 USA
 800-835-3519 • 620-343-1084 • Fax: 620-343-9640
 grs@grstools.com • www.grstools.com
 Last Updated: 03/25/2020