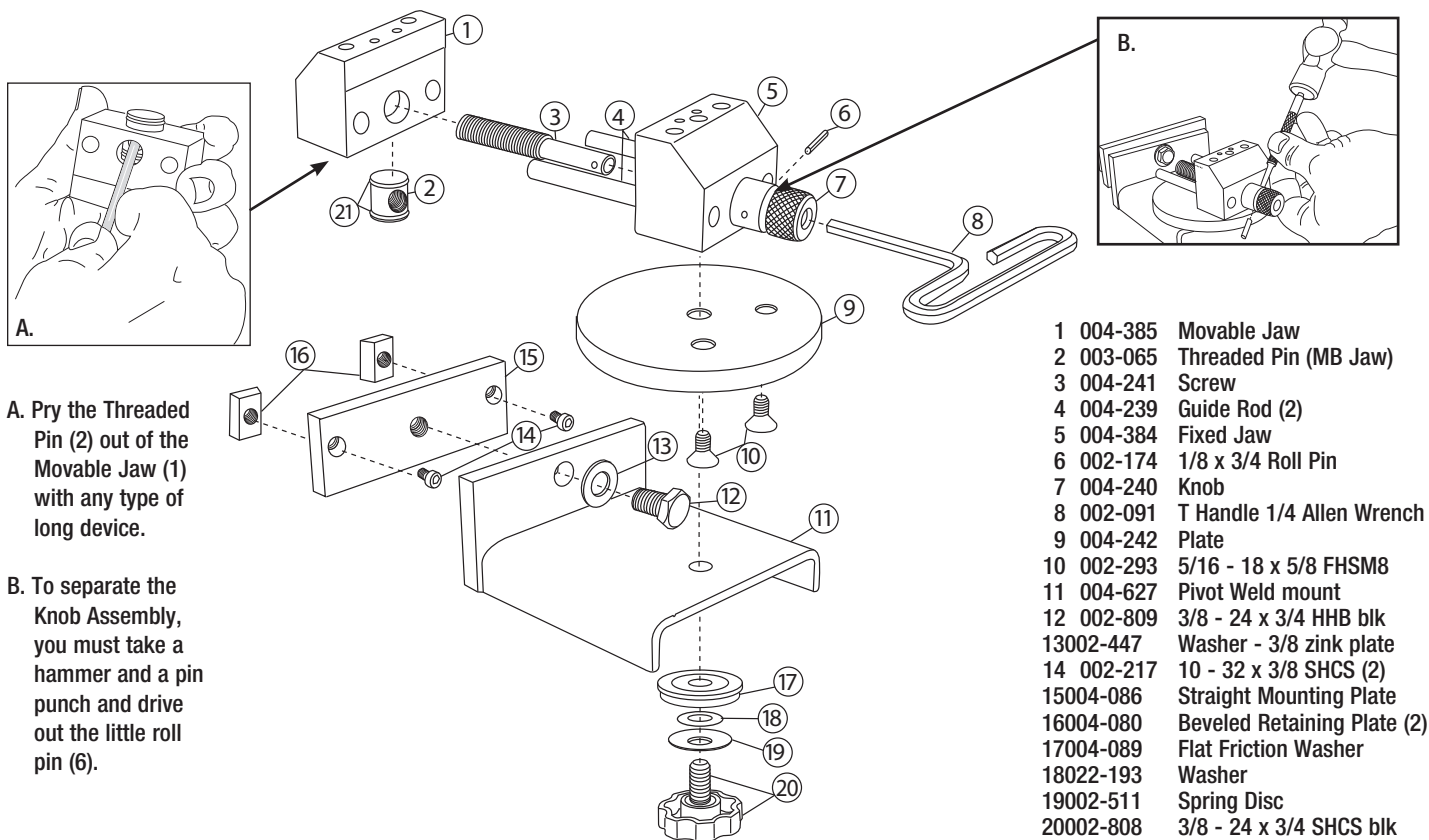




Multi-Purpose Vice for BenchMate® System

PART #004-628



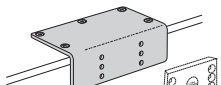
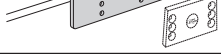
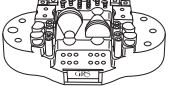

A. Pry the Threaded Pin (2) out of the Movable Jaw (1) with any type of long device.

B. To separate the Knob Assembly, you must take a hammer and a pin punch and drive out the little roll pin (6).

- 1 004-385 Movable Jaw
- 2 003-065 Threaded Pin (MB Jaw)
- 3 004-241 Screw
- 4 004-239 Guide Rod (2)
- 5 004-384 Fixed Jaw
- 6 002-174 1/8 x 3/4 Roll Pin
- 7 004-240 Knob
- 8 002-091 T Handle 1/4 Allen Wrench
- 9 004-242 Plate
- 10 002-293 5/16 - 18 x 5/8 FHSM8
- 11 004-627 Pivot Weld mount
- 12 002-809 3/8 - 24 x 3/4 HHB blk
- 13002-447 Washer - 3/8 zink plate
- 14 002-217 10 - 32 x 3/8 SHCS (2)
- 15004-086 Straight Mounting Plate
- 16004-080 Beveled Retaining Plate (2)
- 17004-089 Flat Friction Washer
- 18022-193 Washer
- 19002-511 Spring Disc
- 20002-808 3/8 - 24 x 3/4 SHCS blk
- 002-512 Knob, Black Rosett
- 21002-127 O-ring, .625 x .75 x .062 (2)

This vise requires the Fixed Mounting Plate part #004-557

ACCESSORIES:

PART NO.		DESCRIPTION
004-559		Optional Mounting Adapter <i>For attaching Fixed Mounting Plate to curved or thin bench tops</i>
004-557		Fixed Mounting Plate
003-520MPV		Attachment Set for Multi-Purpose Vise <i>Includes 30-pc. attachment set, two pin plates and 4 jaw pins</i>
003-662		1/4" Hex Drive Key with Knurled Aluminum Handle <i>Low profile design that is handy and easy to grip. Replacement for the T-handle.</i>

CONTACT YOUR SALES REPRESENTATIVE OR VISIT GRS.COM FOR PRICING AND AVAILABILITY

GLENDO LLC

900 Overlander Road • Emporia, KS 66801 USA
 800-835-3519 • 620-343-1084 • Fax: 620-343-9640
grs@grstools.com • grs.com
 Last Update: 2020-03-25