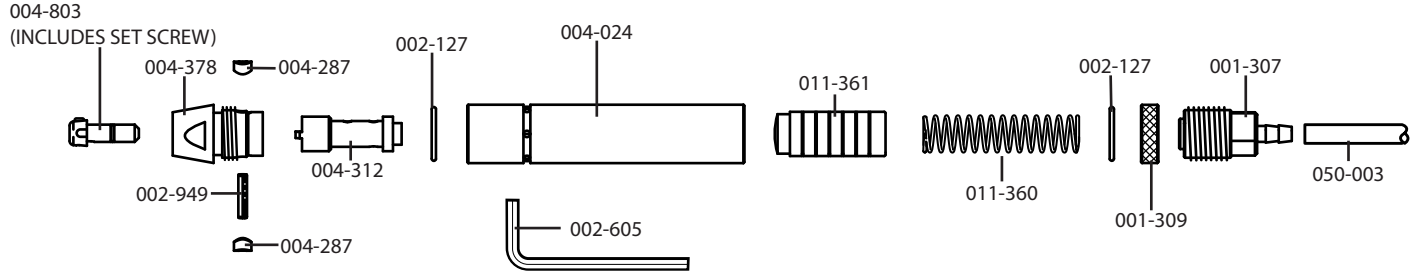


GRS[®] QC LARGE HANDPIECE for the GraverMeister[®]

PARTS LIST • #004-509-QC



PART NO.	DESCRIPTION	PART NO.	DESCRIPTION
001-307	Inlet	004-287	Urethane Washer
001-309	Nut	004-312	QC Receiver
002-950	Set Screw (in Quick Change Chuck- not shown)	004-378	Handpiece Nose
002-127	O-Ring - .625 X .75 X .062	004-434	Air Hose - 1/4" OD X .160" ID X 38"
002-605	Hex Wrench - 5/64"	004-803	Quick Change Chuck (complete with set screw)
002-949	Pin - 1/8" X 5/8"	011-360	Spring
004-024	Handpiece Body	011-361	Piston

GLENDO LLC

900 Overlander Rd • Emporia, KS 66801
 800-835-3519 • 620-343-1084 • Fax: 620-343-9640
www.grstools.com • glendo@glendo.com
 Last Updated: 2020-03-24