

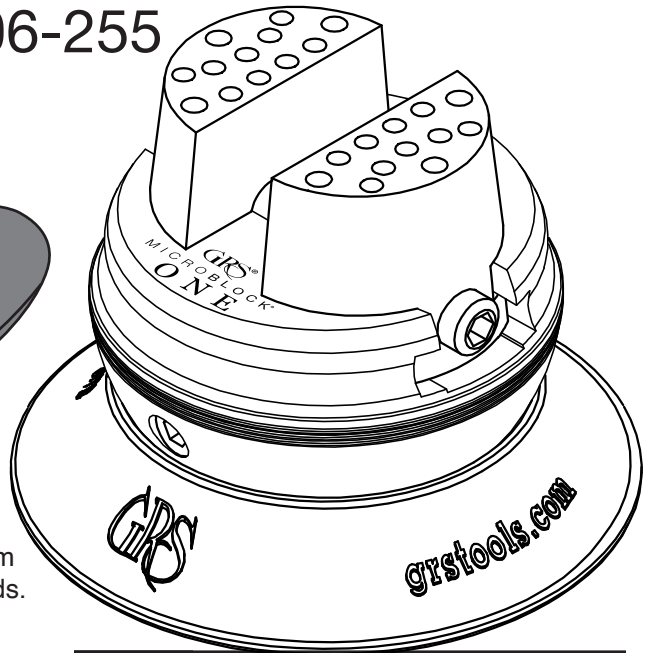
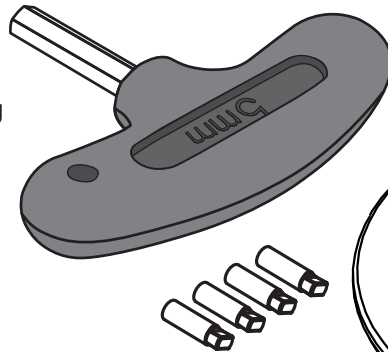


# MICROBLOCK® ONE

## INSTRUCTIONS • #006-255

The GRS MicroBlock® One will provide many years of trouble-free service. It is extremely rugged in construction, yet is relatively simple and easy to maintain. Required lubrication is minimal.

The jaws are drilled to accept engraving block attachments. GRS offers the 520 Attachment Set (#003-520) that includes storage for the pins that come with the block.



### Maintenance

Based on usage, open jaws fully and clean dirt and metal pieces from the threads. After cleaning, apply a small amount of light oil to the threads.

Periodically wipe the vise and vise jaws with a lightweight oil to help prevent rust. All GRS vises are stainless steel except the ONE line vises. Although stainless steel is more rust-resistant, certain body chemistry can still cause it to rust. Recommended products include 3-IN-ONE oil, WD-40 Corrosion Inhibitor, and Super Lube Metal Protector.

### Jaw Thread Replacement

Overtightening the jaws will cause wear and damage to the threads. If jaws become loose, replace with kit #003-629. Remove the jaws by opening them as wide as possible until they come off the end of the jaw screw (**FIG. 1**). The jaw thread pin is located on the underside of each jaw. **NOTE:** Before removing pins, locate the one with the "L". This is the left hand thread pin and will need to be replaced with the same. Apply a small amount of synthetic grease (included in kit) to the O-ring and jaw screw before installing them. Lift the jaw screw out of the spring pins and replace it. Note which side the left hand thread is on. Grease the threads and spring pins well.

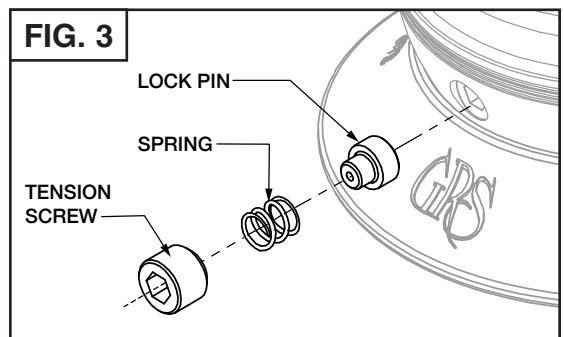
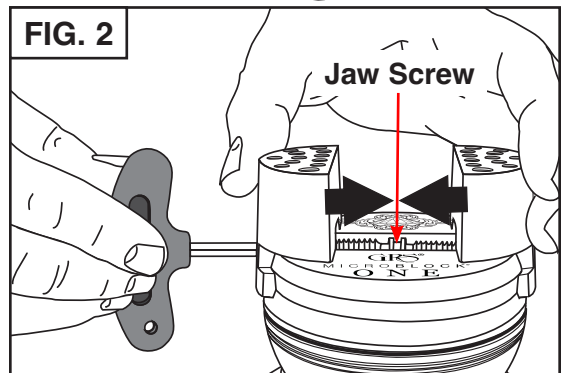
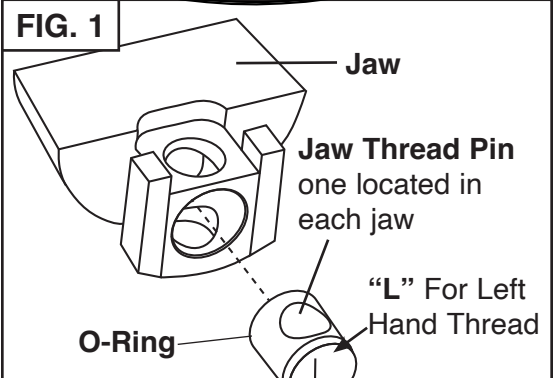
Start the jaw threads at the same time when replacing them (**FIG. 2**). Hold each jaw in position and turn the jaw screw to close them. Either a large rubber band or a second person is useful to hold the jaws against the thread while the jaw screw is turned. If the jaws don't meet at the same time in the center, remove them and try starting the threads at the same time again.

### Rotational Lock Replacement

The LOCK or DRAG PIN is subject to wear by design and may need replacement after extended use. Simply remove the ball swivel tension screw with hex wrench. The Spring and Lock Pin should follow (**FIG. 3**). If not, turn the ball until they fall out. Replace the Lock Pin (order #003-307), Spring and Tension Screw.

### Thread Pin Replacement Kit #003-629

Includes Jaw Screw, Left and Right Thread Pins, O-Rings, and Tube of Synthetic Grease.

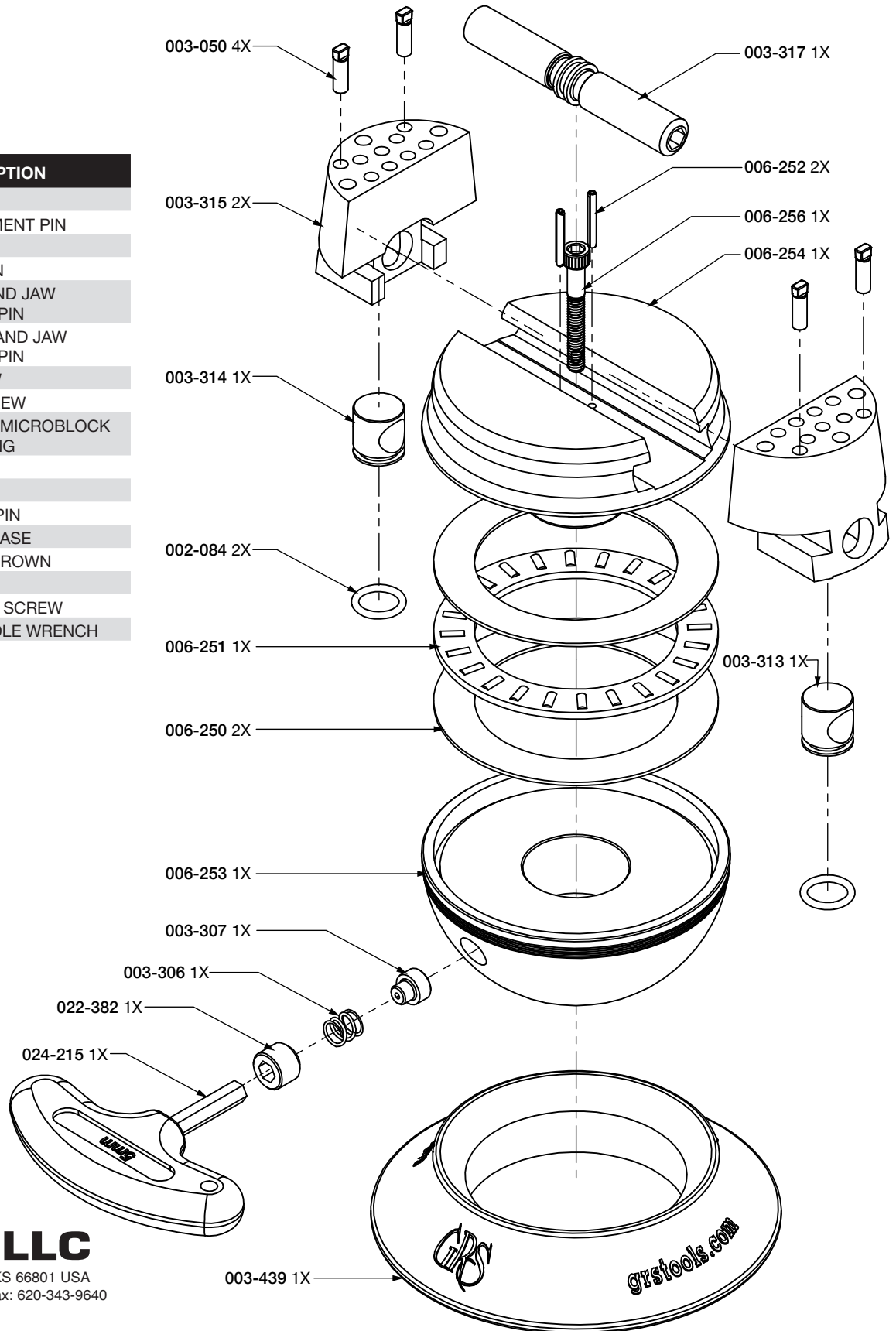




# MICROBLOCK® ONE

## PARTS LIST • #006-255

PART NO.	QTY.	DESCRIPTION
002-084	2	O-RING
003-050	4	ATTACHMENT PIN
003-306	1	SPRING
003-307	1	LOCK PIN
003-314	1	LEFT HAND JAW THREAD PIN
003-313	1	RIGHT HAND JAW THREAD PIN
003-315	2	WISE JAW
003-317	1	JAW SCREW
003-439	1	RUBBER MICROBLOCK BASE RING
006-250	2	WASHER
006-251	1	BEARING
006-252	2	SPRING PIN
006-253	1	BLOCK BASE
006-254	1	BLOCK CROWN
006-256	1	SCREW
022-382	1	TENSION SCREW
024-215	1	"T" HANDLE WRENCH



### GLENDO LLC

900 Overlander Road • Emporia, KS 66801 USA  
 800-835-3519 • 620-343-1084 • Fax: 620-343-9640  
 hello@grs.com • grs.com  
 Last Updated 07/02/2026  
 LIT-590