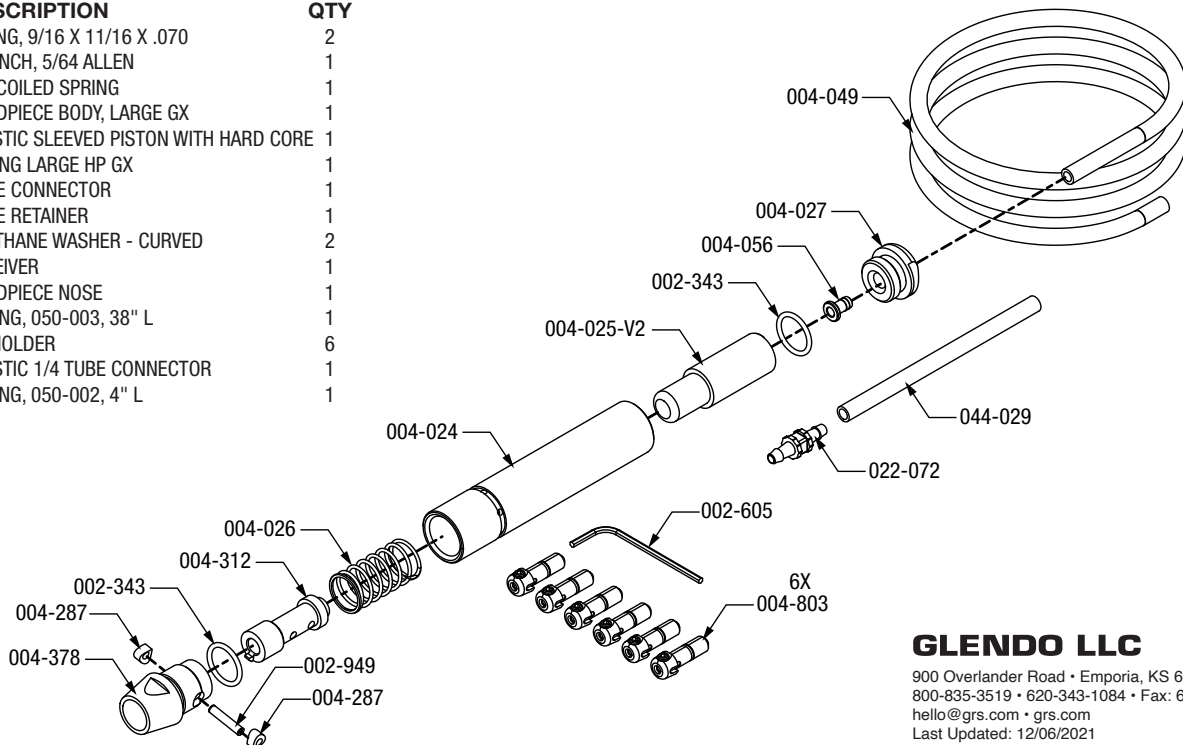




720 QC HANDPIECE

PARTS LIST • #004-720

PART #	DESCRIPTION	QTY
002-343	O-RING, 9/16 X 11/16 X .070	2
002-605	WRENCH, 5/64 ALLEN	1
002-949	PIN-COILED SPRING	1
004-024	HANDPIECE BODY, LARGE GX	1
004-025-V2	PLASTIC SLEEVED PISTON WITH HARD CORE	1
004-026	SPRING LARGE HP GX	1
004-027	HOSE CONNECTOR	1
004-056	HOSE RETAINER	1
004-287	URETHANE WASHER - CURVED	2
004-312	RECEIVER	1
004-378	HANDPIECE NOSE	1
004-049	TUBING, 050-003, 38" L	1
004-803	QC HOLDER	6
022-072	PLASTIC 1/4 TUBE CONNECTOR	1
044-029	TUBING, 050-002, 4" L	1



GLENDO LLC

900 Overlander Road • Emporia, KS 66801 USA
800-835-3519 • 620-343-1084 • Fax: 620-343-9640
hello@grs.com • grs.com
Last Updated: 12/06/2021