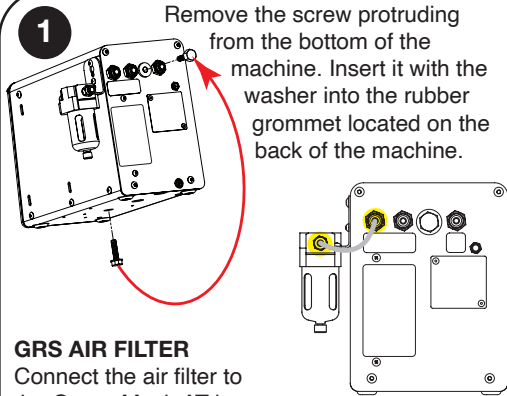


QUICK SET UP INSTRUCTIONS

GraverMach[®] AT

1



Remove the screw protruding from the bottom of the machine. Insert it with the washer into the rubber grommet located on the back of the machine.

GRS AIR FILTER

Connect the air filter to the GraverMach AT by loosening the side cover screw and sliding the bracket onto the screw. Re-tighten screw.

Find the black hose 139mm (5 1/2"). Connect one end to the **air input quick connect fitting** on the back of the machine and the other end to the straight **quick connect fitting**.

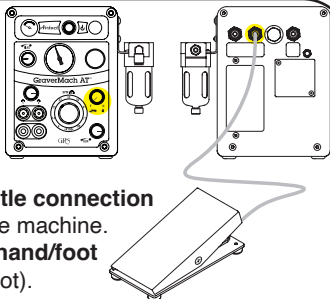
Connect the air compressor hose to the 90° **quick connect fitting** or the barbed fitting supplied.

NOTICE: This machine requires clean, dry oil-free air. We suggest using an oil free compressor. If your compressor is an oil type, you MUST have an oil removal filter, coalescing type (#004-730 or equivalent), in the air supply line to this machine. If you are unsure of this requirement, please call 800-835-3519 and ask for Technical Services. OIL CONTAMINATION IS NOT COVERED BY WARRANTY.

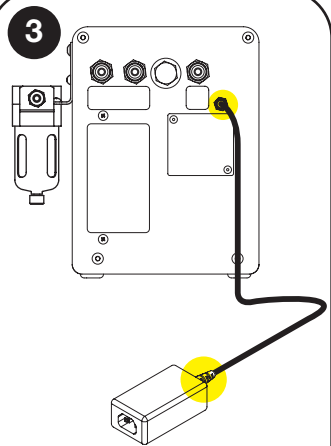
2

GRS FOOT THROTTLE

Connect the foot throttle hose to the **throttle connection** on the back of the machine. Turn the **airtact hand/foot control** to "F" (foot).



3



POWER SUPPLY

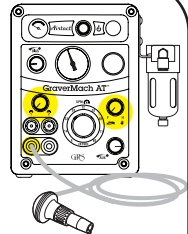
IMPORTANT: The rotary valve is lubricated by air passing through it. Do not run electrical system unless air system is on.

Connect the electrical power cord into the 24 Volt converter box. Plug the converter cord into the jack on the back of the machine.

4

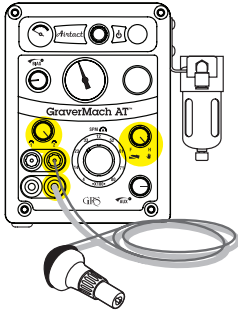
GRS IMPACT HANDPIECE

Connect the handpiece hose to one of the **handpiece quick connect fitting**. Move the **handpiece selector knob** to the corresponding **handpiece quick connect fitting** you are using. Screw caps onto the Airtact twist lock control ports.

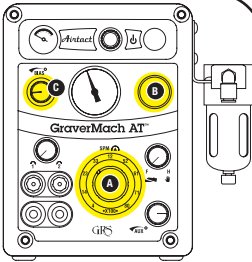


5**GRS AIRTACT HANDPIECE**

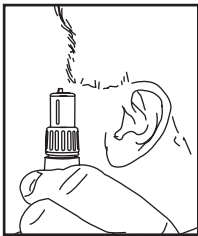
For Airtact use, connect the handpiece to the **handpiece quick connect fitting** you are using and connect the smaller tube to the **twist lock control port** above. Turn the **Airtact hand/foot control** to "H" (Hand).

**6****HANDPIECE TUNING**

Move the **handpiece selector knob** to the corresponding **handpiece quick connect fitting** you are using. Set the **stroke per minute (A)** to 2300. Set the main **air regulator knob (B)** to 0.1 ~ 0.4 BAR (2~5 PSI). Close the **bias control valve (C)**.

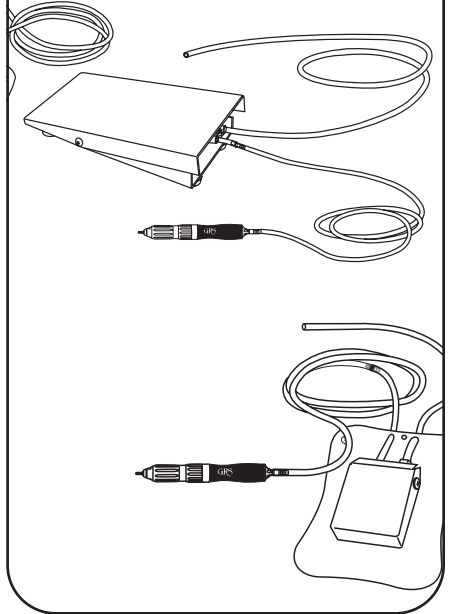


Hold the handpiece you have selected to use vertically, tool holder end up, next to your ear. Without depressing the foot throttle or palm control, **SLOWLY** increase the air pressure until the handpiece begins to buzz. Continue to increase the air pressure until the handpiece vibrates and knocks. Slowly add air pressure until the knocking stops. This is the perfect air pressure for each handpiece. Now you are free to move the SPM (strokes per minute) dial to whatever setting desired.

**7****ROTARY HANDPIECE**

To connect a rotary handpiece to the GraverMach AT to the **auxiliary output quick connect fitting** the back the machine. Turn the **handpiece selector knob** to the center position. Turn the **auxiliary air open/close knob** counter-clockwise to allow air to flow.

SPECIAL NOTE: When using the NSK High Speed Handpiece do not exceed 2.5bar (35psi).

**GLENDO LLC**

900 Overlander Road • P.O. Box 1153
 Emporia, KS 66801 USA
 800-835-3519 • 620-343-1084 • Fax: 620-343-9640
 hello@grs.com • www.grs.com

Last Updated: 2022-07-15

LIT-326