

# GRS® GraverMax® AT Filter Hook Up Kit

INSTRUCTIONS • #004-971

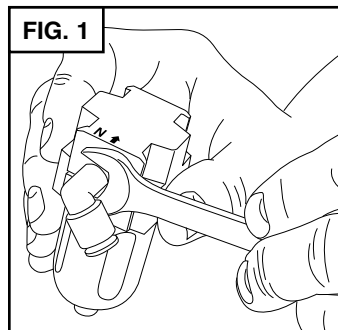
GraverMax kit (#004-971) contains a 5 micron filter and fittings designed to make hooking up your new Airtact® unit to the GraverMax easy. This kit installs in the air supply line that runs to the GraverMax before it reaches the stock filter/regulator mounted at the rear of the GraverMax unit. Installation will require using the parts that come with the Airtact® as well as the parts included in this hook-up kit.

Please note: The hose (#044-136, **FIG. 3**) is for connecting the HIGH pressure air coming from your compressor. The hose (#044-135, **FIG. 3**) is for connecting LOWER pressure air from the foot throttle port to the Airtact®.

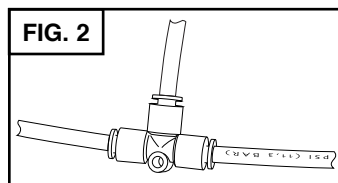
First decide where your new Airtact® unit will be placed. This will determine where the filter is mounted since it can be placed on a wall, side of a workbench or the side of the Airtact®. For instructional purposes, we will be mounting it to the right side of the Airtact®. Please refer to the PARTS LIST for product descriptions and illustrations.

Locate the filter body (#022-944), and install the supplied pieces, the 90° (#022-230) to the side marked "N" (**FIG. 1**) and the push-in male connector (#022-231) to the opposite threaded port. After tightening both pieces, the filter is ready to be mounted.

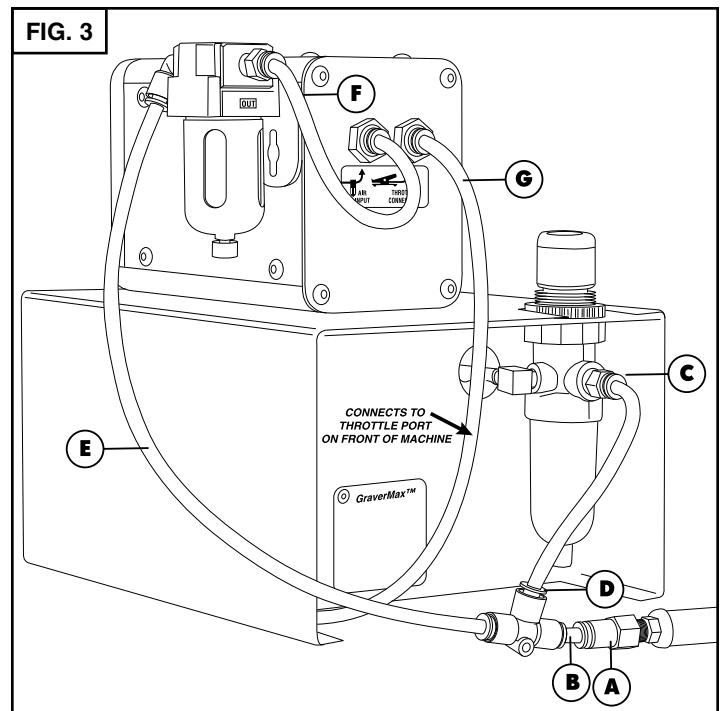
There are 4 screws on each side of the Airtact®. Looking at the front of the unit, remove the screw located on the right side, top-rear. Using the same screw, attach the bracket (#044-051) and tighten firmly. Place the filter under the bracket and use the 2 screws (#022-978) supplied with the kit to attach it.



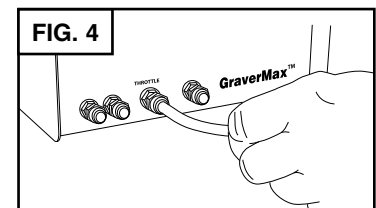
Disconnect the air supply line from the air supply fitting and unscrew the air supply fitting from the GraverMax filter/regulator. Using this air supply line, connect it to the tee connector (#023-032)



(**FIG. 2**) supplied with the Airtact® unit. If you are using an air hose other than the 1/4" OD white plastic hose included in our compressor hookup kit, we have supplied 1/8" NPT quick connect fitting (#023-042) for rubber air hoses with a male 1/8" NPT fitting on the end. Screw the fitting on the end of your hose (**FIG. 3.A**) and you are ready for a push-to-connect hookup using the short hose (#044-111, **FIG. 3.B**) supplied. Take the tee connector (#023-032) and push it onto the short hose.



On the existing GraverMax filter/regulator unit, take the push-in male connector (#022-231) and install it in the regulator where the air supply hose was previously connected (**FIG. 3.C**). Using the hose (#044-135) supplied, cut to desired length and insert one end into the new fitting located on the GraverMax filter/regulator and the other end into the tee connector (#023-032, **FIG. 3.D**). Cut another piece of hose and connect one end to the filter assembly 90° fitting (#022-230) on the side marked "N" of the filter body, and the other end of the hose to the tee connector (#023-032, **FIG. 3.E**). Cut one last piece of hose and connect one end to the other side of the filter assembly to the fitting (#022-231) and the other end of the hose to the Airtact® quick connect fitting marked "AIR INPUT" located on the back of the unit (**FIG. 3.F**).



On the the front of the GraverMax, remove the foot throttle hose from the throttle port and use the hose (#044-136) and the compression fitting (#002-607) supplied with the hook-up kit to connect the hose. Install the compression fitting onto the hose and connect to the fitting on the front of the GraverMax marked "THROTTLE" (**FIG. 4**). Connect the other end of the hose to the back of the Airtact® unit marked "THROTTLE CONNECTION" (**FIG. 3.G**). NOTE: Try to keep this hose length to a minimum, TRIM EXCESS LENGTH. You are now ready to follow the instructions supplied with the Airtact® unit.

# GRS® GraverMate AT Filter Hook Up Kit

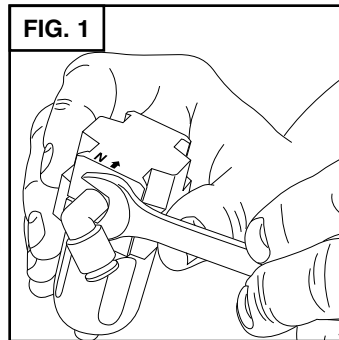
INSTRUCTIONS • PART #004-972

GraverMate kit (#004-972) contains a 5 micron filter and fittings designed to make hooking up your new Airtact® unit to the GraverMate easy. This kit installs in the air supply line that runs to the GraverMate before it reaches the stock filter/regulator air supply fitting mounted at the rear of the GraverMate unit. Installation will require using the parts that come with the Airtact® as well as the parts included in this hook-up kit.

Please note: The hose (#044-136) is for connecting the HIGH pressure air coming from your compressor. The hose (#044-135) is for connecting LOWER pressure air from the foot throttle port to the Airtact®.

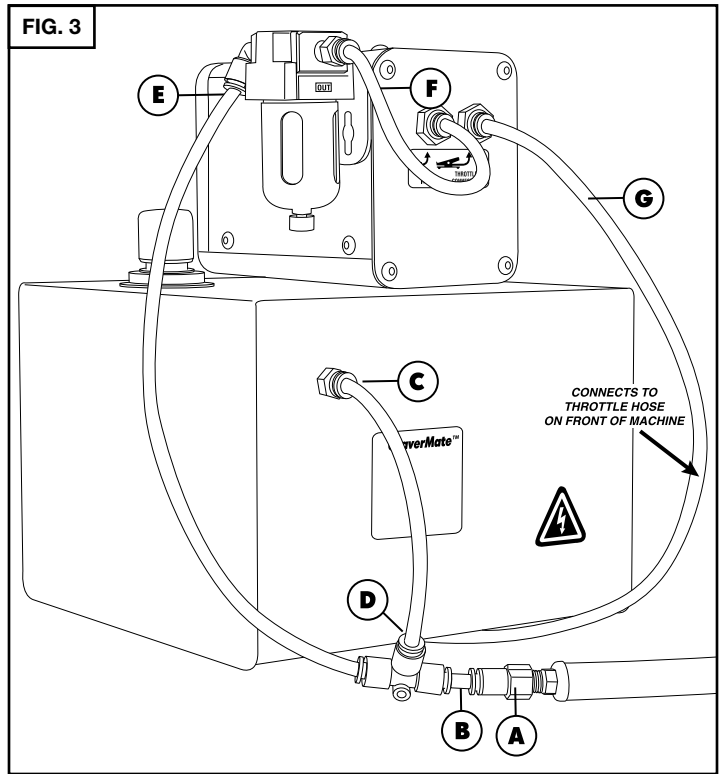
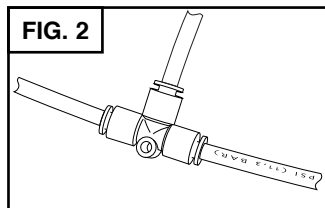
First decide where your new Airtact® unit will be placed. This will determine where the filter is mounted to since it can be placed on a wall, side of a workbench or the side of the Airtact®. For instructional purposes, we will be mounting it to the right side of the Airtact®. Please refer to the PARTS LIST for product descriptions and illustrations.

Locate the filter body (#022-944), and install the supplied pieces, the 90° (#022-230) to the side marked “N” (FIG. 1) and the push-in male connector (#022-231) to the opposite threaded port. After tightening both pieces, the filter is ready to be mounted.



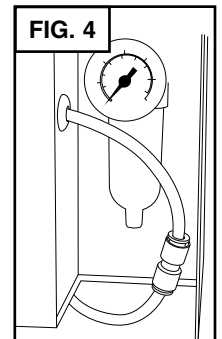
There are 4 screws on each side of the Airtact®. Looking at the front of the unit, remove the screw located on the right side, top-rear. Using the same screw, attach the bracket (#044-051) and tighten firmly. Place the filter under the bracket and use the 2 screws (#022-978) supplied with the kit to attach it.

Disconnect the air supply line from the air supply fitting and unscrew the air supply fitting from the GraverMate rear panel. Using this air supply line, connect it to the tee connector (#023-032) supplied with the Airtact® unit. (FIG. 2) If you are using an air hose other than the 1/4" OD white plastic hose included in our compressor hookup kit, we have supplied 1/8" NPT quick connect fitting (#023-042) for rubber air hoses with a male 1/8" NPT fitting on the end. Screw the fitting on the end of your hose (FIG. 3.A) and you are ready for a push-to-connect hookup using the short hose (#044-111, FIG. 3.B) supplied. Take the tee connector (#023-032) and push it onto the short hose.



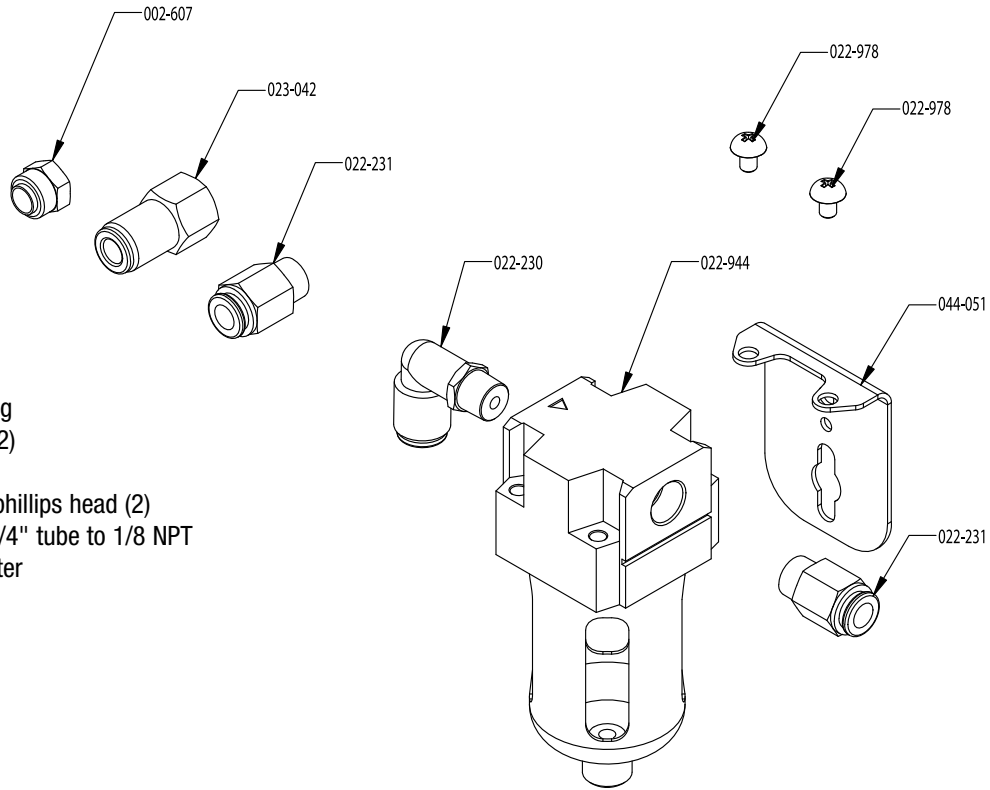
On the rear of the GraverMate install connector (#022-231) into the air supply port where the supply line was previously connected (FIG. 3.C). Using the hose (#044-135) supplied, cut to desired length and insert one end into the new fitting located in the GraverMate air supply port and the other end into the tee connector (#023-032, FIG. 3.D). Cut another piece of hose and connect one end to the filter assembly 90° fitting (#022-230) on the side marked “N” of the filter body, and the other end of the hose to the tee connector (#023-032, FIG. 3.E). Cut one last piece of hose and connect one end to the other side of the filter assembly to the fitting (#022-231) and the other end of the hose to the Airtact® quick connect fitting marked “AIR INPUT” located on the back of the unit (FIG. 3.F).

On the front the GraverMate, locate the foot throttle hose and cut it approximately 6~8" (152 mm ~ 203 mm) from the panel where the throttle hose exits. Use the straight push-in connector (#023-041) to join the short throttle hose to the hose (#044-136) (FIG. 4) supplied with the hook-up kit. Run this hose to the back of the Airtact® control unit and plug it into the port marked “THROTTLE CONNECTION” (FIG. 3.G). NOTE: TRY TO KEEP THIS HOSE LENGTH TO A MINIMUM, TRIM EXCESS LENGTH. You are now ready to follow the instructions supplied with the Airtact® unit.



# GRS® AT Filter Hook Up Kit

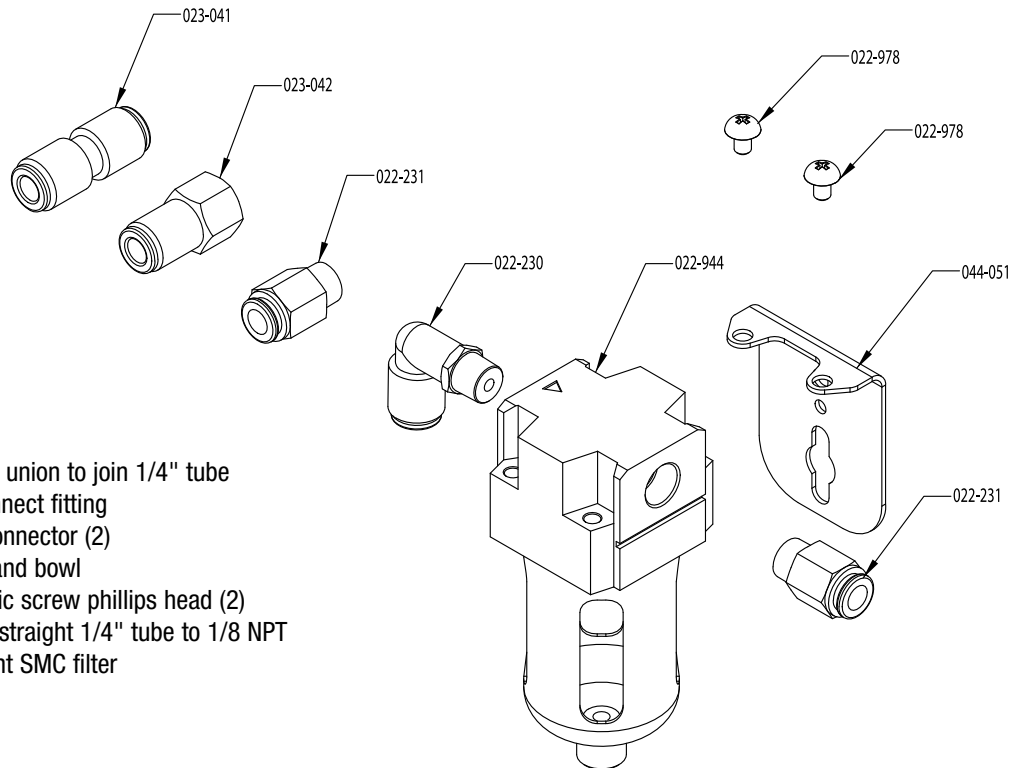
PARTS LIST • #004-971



Part #	Description
002-607	Nut with sleeve
022-230	90° push to connect fitting
022-231	Push-in male connector (2)
022-944	5-micron filter and bowl
022-978	4 mm x .7 metric screw phillips head (2)
023-042	Push-in female straight 1/4" tube to 1/8 NPT
044-051	Bracket to mount SMC filter

# GRS® AT Filter Hook Up Kit

PARTS LIST • #004-972



Part #	Description
023-041	Push-in straight union to join 1/4" tube
022-230	90° push to connect fitting
022-231	Push-in male connector (2)
022-944	5-micron filter and bowl
022-978	4 mm x .7 metric screw phillips head (2)
023-042	Push-in female straight 1/4" tube to 1/8 NPT
044-051	Bracket to mount SMC filter

**GLENDO LLC**

900 Overlander Road • Emporia, KS 66801 USA  
800-835-3519 • 620-343-1084 • Fax 620-343-9640  
glendo@glendo.com • www.glendo.com  
Last Updated: 2021/04/06