

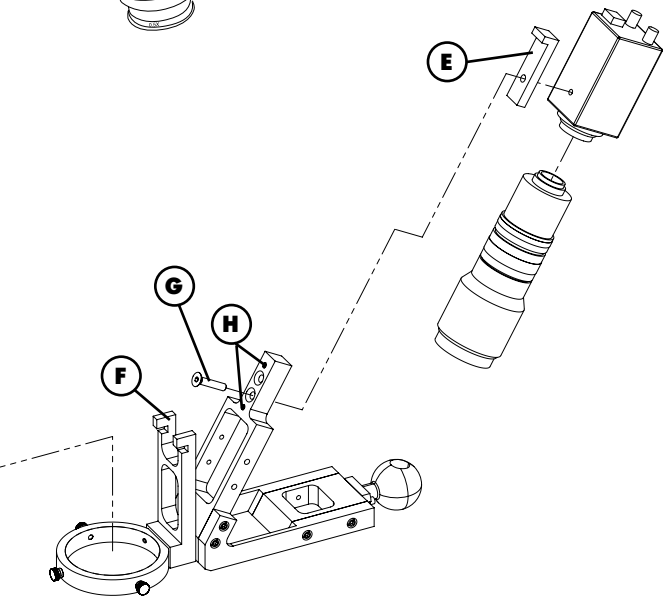
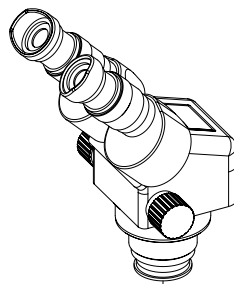
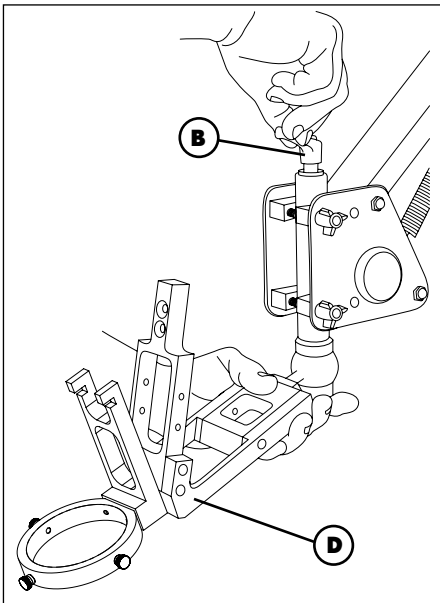
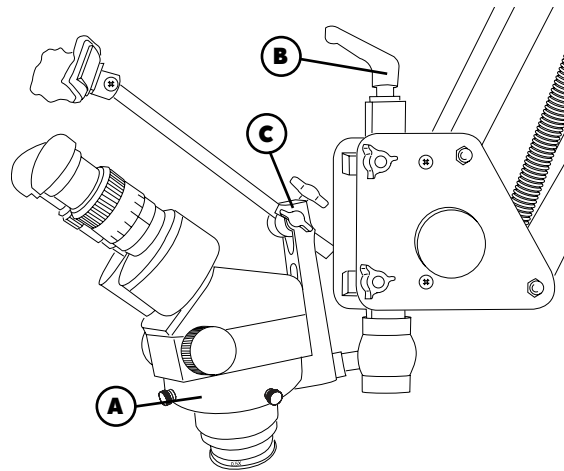
GRS Camera Mount INSTALLATION

for GRS Acrobat Microscope Stand

PART #003-687

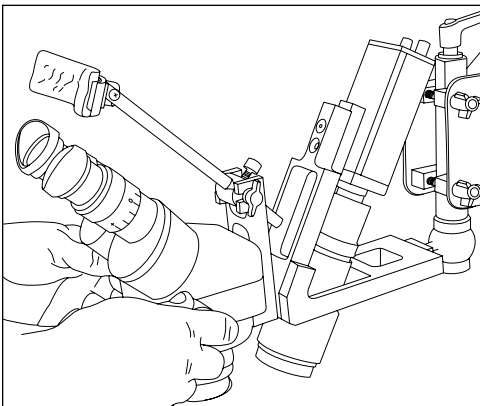
To begin the installation process of the Camera Mount, you must first remove the ring light if one is used. Next, loosen the screws surrounding the Acrobat mounting ring (A), and remove the microscope from the ring.

Unscrew the adjustable handle (B), which holds the microscope mounting ring and headrest assembly (C), by turning counter clockwise to the Acrobat mounting post located at the front of the microscope stand. The long stem screw and cupped washer will now be free, lay them aside. You will use them when re-attaching the camera mount.



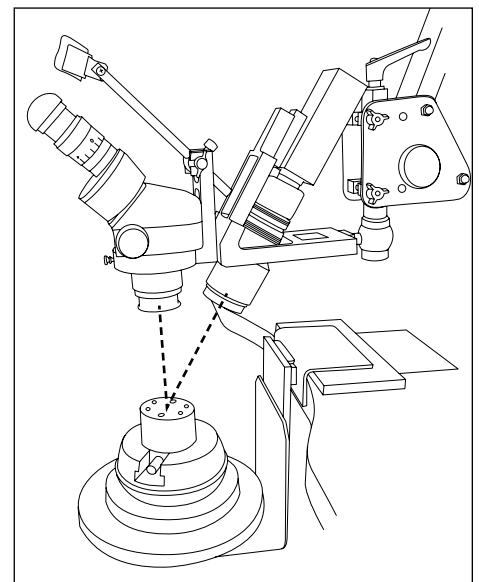
Install the camera mount assembly (D) and gently snug the adjustable handle (B) clockwise so this assembly will not move when attaching the camera and lens.

This mount comes with two adapters (E): one is for the 2" x 2" body camera (0.506" #044-094); the other is for the 1 11/16" x 2" camera (0.350" #044-093). These two adapters vary in the thickness of the material to allow the camera/lens assembly to stay centered in the open area where the lens passes through.



Transfer the headrest from the old microscope holder assembly (F) and tighten gently.

Mount the camera using the correct mount bolt (G) and adapter (E) and leave it slightly loose. Adjust the camera using the set screws (H) to insure the camera has the same view as the microscope.

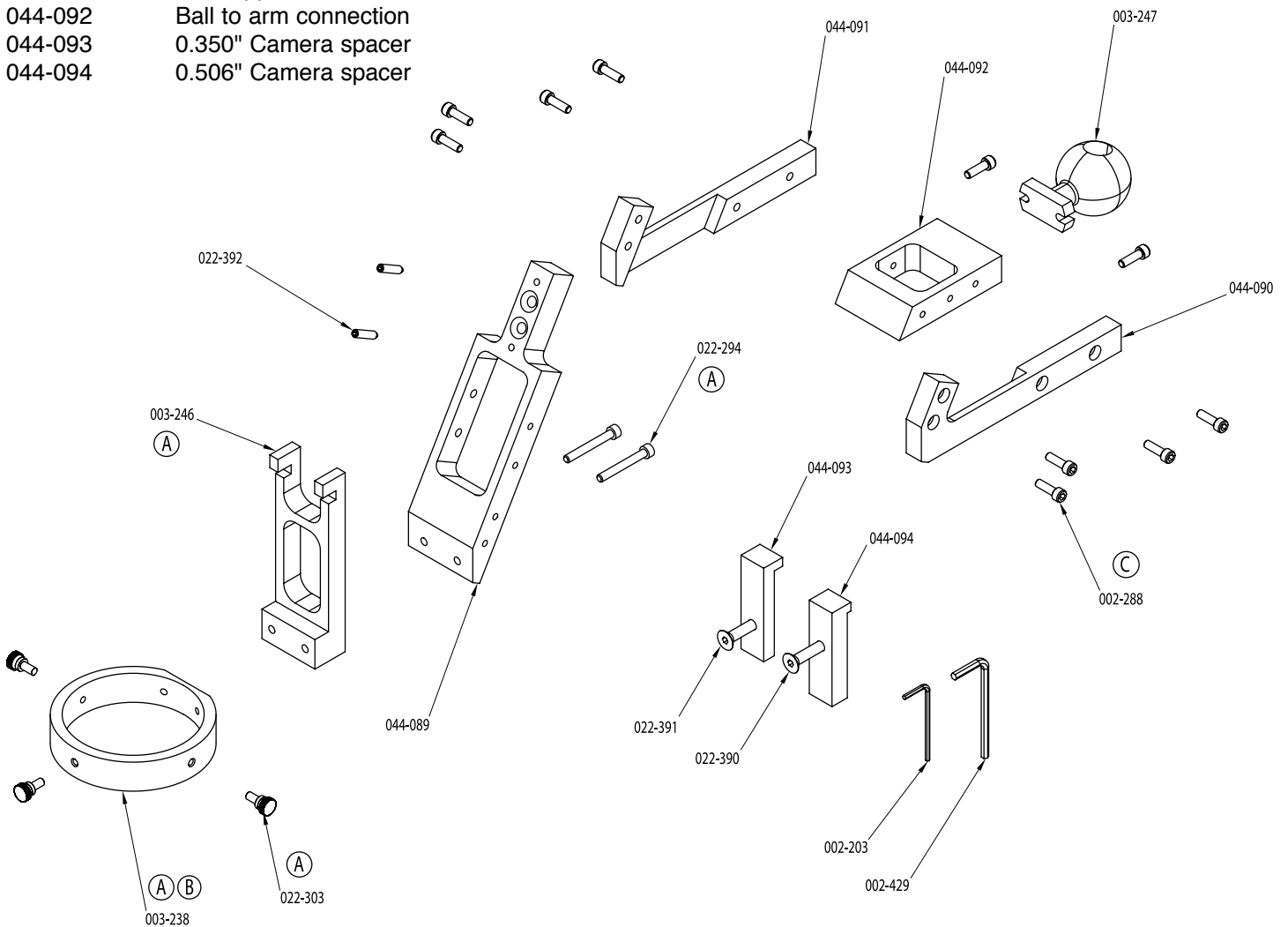


GRS Camera Mount PARTS LIST

for GRS Acrobat Microscope Stand

PART #003-687

Part Number	Description
002-203	Wrench, 3/32
002-288	#10-32 x 5/8 SHCS BLK
002-429	Wrench, 5/32
003-238	Microscope Ring
003-246	Headrest mount
003-247	Microscope ball
022-294	10-32 x 1 1/2 SHCS
022-303	Thumb screw
022-390	1/4-20 x 1.50 FHSCS
022-391	1/4-20 x 1.250 FHSCS
022-392	Set screw, 10-32 x .75 full dog
044-089	Camera Mount Holder
044-090	Right Support Arm
044-091	Let Support Arm
044-092	Ball to arm connection
044-093	0.350" Camera spacer
044-094	0.506" Camera spacer



GLENDO

CORPORATION
 900 Overlander Road
 P.O. Box 1153
 Emporia, KS 66801 USA
 800-835-3519 • 620-343-1084
 fax 620-343-9640
 glendo@glendo.com
 www.glendo.com