



Turtable Base for LOW PROFILE BALL VISE

TURNTABLE BASE #003-616-V2 for MICROSCOPE WORK

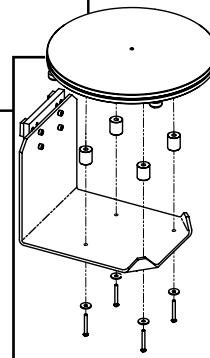
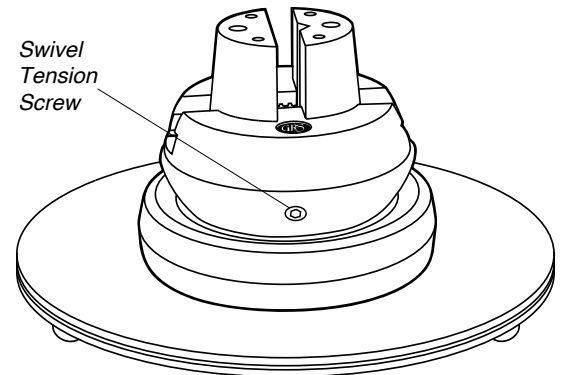
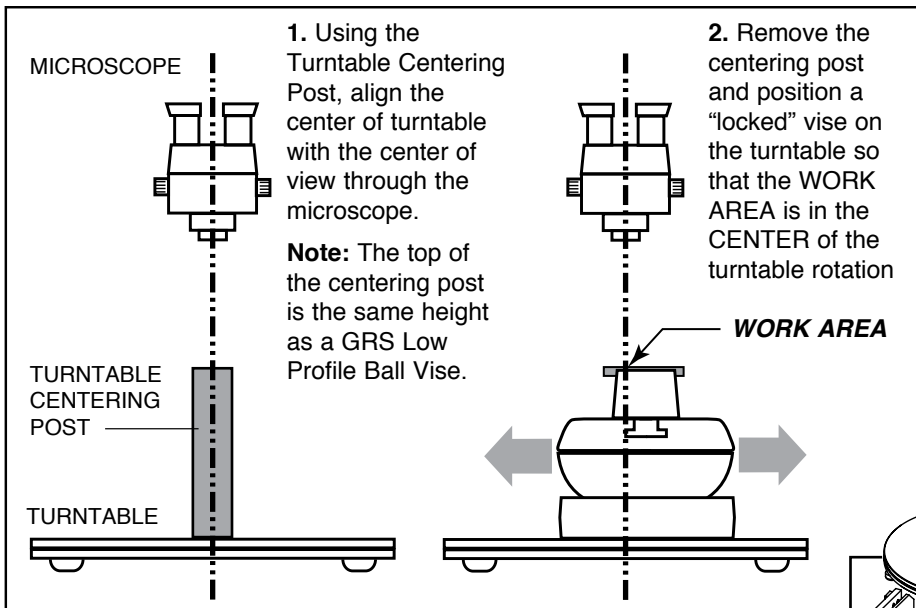
First, place the centering post in the center of the turtable and position both under the microscope as shown at right.

Note: The post is the same height as the GRS low profile ball vise. Locate the top of the post while looking through the microscope. Rotating the turtable, position the exact center of the post in the center of view. The turtable is now properly centered. Remove the post, do not move the turtable.

Place the low profile ball vise on the turtable. Tighten the swivel tension screw on the ball vise until the ball will not turn. The turtable now becomes your rotation. Position the ball vise under the microscope with the work area in view. Change working views by moving the block on the turtable, not by moving the turtable.

MAINTENANCE - DO NOT OIL

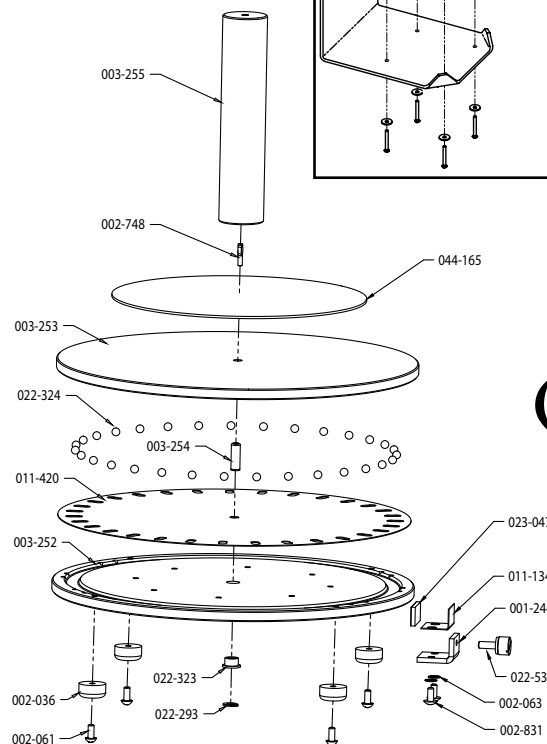
Occasionally you may want use air and blow any dirt and metal pieces from between the plates.



TURNTABLE MOUNT KIT Part #004-672 is required to mount the turtable on GRS Large Block Shelf #004-665.

NOTE: TURNTABLE WILL NOT MOUNT ON STANDARD BLOCK SHELF #004-578

PART #	DESCRIPTION	QTY.
001-244	Angle flange	1
002-036	RUBBER MOUNTING FOOT	4
002-061	#8-32 X 3/8 RHMS Z/P	4
002-063	#8 LOCK WASHER	2
002-748	PIN, DRIV-LOK 1/8 X 5/8 N PHA	1
002-831	SCREW, 8-32 3/8 TRUSHNS Z/P	2
003-252	BASE PLATE	1
003-253	UPPER PLATE	1
003-254	PULL OUT DOWEL PIN 1/4 X 3/4	1
003-255	TURNTABLE CENTERING POST	1
011-134	Stainless steel clamp shim	1
011-420	BEARING CAGE	1
022-293	GRIP RING	1
022-323	BRONZE FLANGE BUSHING	1
022-324	7/32 DELRIN GRADE 1 BALL	31
022-539	THUMB SCREW	1
023-047	LEATHER FRICTION PAD	1
044-165	7-1/8 DIA low friction PTFE DISC	1



Glendo LLC
900 Overlander Road
Emporia, KS 66801 USA

Toll-Free: 1-800-835-3519
Phone: 620-343-1084
Fax: 620-343-9640
E-mail: glendo@glendo.com
www.grstools.com

Printed in USA. Products made in USA.

All rights reserved.

Last Update: 2014-12-2

LIT-157